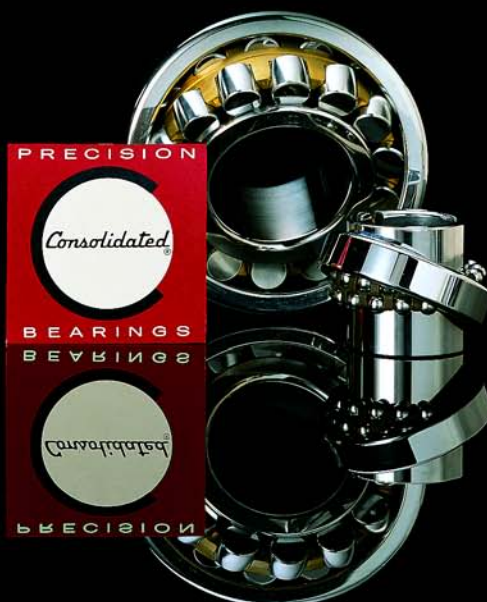


**Oil Seals,
Linear Recirculating Ball Bearings,
Journal Roller Assemblies,
Spherical Plain Bearings, Rod Ends**



Product Reference & Interchange Catalog

CATALOG
2008



CONSOLIDATED BEARINGS COMPANY

Ten Wing Drive, Cedar Knolls, New Jersey 07927-1099

Tel: (973) 539-8300

Toll Free: 1-877-CON-BRG4

Fax: (973) 539-5902

(266-2744)

E-mail: sales@consbrgs.com Web Site: www.consbrgs.com

The contents of this catalog are the copyright of the publisher and may not be reproduced (including extracts) unless permission is granted in writing by Consolidated Bearings Company, Cedar Knolls, New Jersey. Every care has been taken to ensure the accuracy of the data contained in this catalog. No liability can be accepted for any errors, omissions or manufacturing design changes.

Price per copy - \$75.00

© Copyright 2008, Consolidated Bearings Co.



About the Company...

Consolidated Bearings Company, founded in 1932 by William F. Meerwarth, was originally established as a bearing rebuilder and manufacturer. In 1934 **Consolidated** obtained the exclusive contract to represent the SRO Ball Bearing Company of Zürich, Switzerland for sales of its products in the United States.

During World War II, when importing from Europe became non-existent, **Consolidated** concentrated its efforts in its Bearing Rebuilding Division. This Division added many valuable contributions to the War Effort in repairing and rebuilding worn bearings on an emergency basis. For their efforts, **Consolidated** earned the Army/Navy "E" Award.

Soon after the war, **Consolidated** reactivated its Import Division by representing several major European bearing manufacturers. Selling exclusively to Bearing Distributors and OEM Accounts, **Consolidated** established a network of sales offices and district warehouses throughout the United States to provide prompt and efficient service to all its customers.

In 1969, **Consolidated** built and moved to its present location in Cedar Knolls, New Jersey, a suburb West of New York City. Since then, **Consolidated** has twice increased the size of its facilities to keep up with its expanding product line. The most recent enlargement added another 125,000 square feet of warehouse space.

Consolidated is constantly looking at new products and new technologies to meet the future needs of its customers. The goal at **Consolidated** is to provide its customers with the most reliable service possible.

Abbreviations / Brands - Manufacturers

The following is a list of abbreviation/brands we have used in this catalog to identify the manufacturers and their respective country of origin.

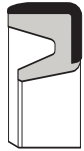
BRAND	MANUFACTURER
ADR	Les Applications du Roulement - Div. of SKF Europe - France
AETNA	Aetna Bearing Co. - U.S.A.
AMERICAN	American Roller Bearing Co. - U.S.A.
ANDREWS	Andrews Bearing Corp. – Subs. of MPB Corp. – U.S.A.
AURORA	Aurora Bearing Co. – U.S.A.
BAL	Emil Baltzer - Germany
4 BARDEN	The Barden Corp. - Div. of Industrierwerk Schaeffler-Germany & USA.
BCA	BCA Bearing Div. - Federal Mogul - U.S.A.
BERLISS	Berliss Bearing Co. - U.S.A.
BOWER	Bower Bearing Div. - Federal Mogul - U.S.A.
CFW	Carl Freudenberg - Germany
CORLETT-TURNER	Corlett-Turner Co. - U.S.A.
ELGES	Helmut Elges GmbH - Germany
3 FAF	Fafnir Bearing - Div. of The Torrington Co. - U.S.A.- Subsidiary of Timken Bearing Co.
4 FAG	FAG Kugelfischer Georg Schafer & Co. - Germany and U.S.A. Subs. of Industrierwerk Schaeffler-Germany & USA.
FBC	Fafnir Bearing Co. Ltd. - England
FED/Schatz	Schatz Federal Bearing Co. Inc. - U.S.A.
GOETZE	Goetzewerka - Germany
HEIM	Heim Bearings Div. – Roller Bearing Co. of America – U.S.A.
1 HOFF	Hoffmann Manufacturing Co. - U.S.A. - England
HYATT	New Departure Hyatt - Hyatt Bearings Div. - U.S.A.
INA	Industrierwerk Schaeffler - Germany & U.S.A.
ISC	Ishii Steel Ball Co. Ltd. – Div. of Genbearco International Corp. - Japan
KACO	Kupfer-Asbest Co. - Germany
KAYDON	Kaydon Corp. - U.S.A.
McGILL	McGill Manufacturing Co. - U.S.A.
MRC	MRC Bearings - Div. of SKF Industries - U.S.A.
NACHI	Nachi-Fujikoshi Corp. - Japan
NADELLA	Nadella Societe Anoyma - France
ND	New Departure Hyatt - U.S.A.
2 NH	Norma Hoffmann Bearing Corporation - U.S.A.
NICE	Nice Ball Bearing Co. - Div. SKF Industries - U.S.A.
NMB	Nippon Miniature Bearing Co. Ltd. – Japan
NSK	NSK Bearing Corp. - Japan
NTN	NTN-Toyo Bearing Co. Ltd. - Japan
RBC	Roller Bearing Co. of America - U.S.A.
RHP	Ransome Hoffmann Pollard Ltd. - England
1 R&M	Ransome & Marles Bearing Co. Ltd - England
RIV	RIV - SKF - Italy
RMB	Landis & Gyr, Inc. - U.S.A.
ROLLWAY	Rollway Bearing Div. - Lipe-Rollway Corp. - U.S.A.
SEALMASTER	Sealmaster Bearing Div. - Emerson Electric - U.S.A.
SKF	SKF Industries - U.S.A, Sweden, England, Germany, France
SMITH	Smith Bearing Co. - U.S.A.
SNR	Societe Nouvelle de Roulements - France
SPHERCO	Spherco Bearing Div. – Emerson Electric – U.S.A.
2 SRO	J. Schmid-Roost Ltd. - Switzerland
STAR	Deutsche Star Kugelhalter GmbH - Germany
STEYR	Steyr-Walzlager GmbH - Subs. of SKF Industries - Austria
THOMSON	Thomson Industries Inc. - U.S.A.
TORRINGTON	The Torrington Company - U.S.A.- Subsidiary of Timken Bearing Co.

¹ These manufacturers have been reorganized to form RHP - Ransome Hoffmann Pollard Ltd.

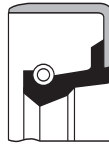
² These manufacturers have been purchased by FAG. Therefore, these brands are no longer in use.

³ These manufacturers have been reorganized to form a subsidiary of Timken Bearing Co

⁴ These manufacturers have been reorganized to form a division of Industrierwerk Schaeffler-Germany & USA.



Narrow Width



Style 822N
Ground Metal O.D.



Style 824N
Ground Metal
O.D. - Closed



Style 827N
Rubber O.D.

OIL SEALS - METRIC DIMENSIONS

Consolidated No.				Interchange-Style No.			Consolidated No.				Interchange-Style No.			
d	D	B	Style No.	CFW	GOETZE	KACO	d	D	B	Style No.	CFW	GOETZE	KACO	
*5	9	2	mm	-	-	-	*15	21	3	mm	-	-	-	
*6	10	2	mm	-	-	-	*15	23	3	mm	-	-	-	
*6	12	2	mm	-	-	-	827N	BA	827N	DG	827N	BA	827N	
6	16	7	mm	822N	B1	822N	827N	BA	827N	DG	827N	BA	827N	
6	22	7	mm	827N	BA	827N	DG	827N	BA	827N	DG	827N	DG	
*7	11	2	mm	-	-	-	827N	BA	827N	DG	-	-	-	
*7	14	2	mm	-	-	-	827N	BA	827N	DG	-	-	-	
7	16	7	mm	827N	BA	827N	DG	827N	BA	827N	DG	827N	DG	
7	22	7	mm	827N	BA	827N	DG	827N	BA	827N	DG	827N	DG	
*8	12	3	mm	-	-	-	*16	20	2.5	mm	-	-	-	
*8	15	3	mm	-	-	-	*16	22	3	mm	-	-	-	
8	16	7	mm	827N	BA	827N	DG	*16	24	3	mm	822N	B1	822N
8	22	7	mm	827N	BA	827N	DG	827N	BA	827N	DG	827N	BA	
*9	13	3	mm	-	-	-	827N	BA	827N	DG	827N	BA	827N	
9	18	7	mm	827N	BA	827N	DG	827N	BA	827N	DG	827N	DG	
9	22	7	mm	822N	B1	822N	-	824N	-	824N	-	-	-	
*10	14	3	mm	-	-	-	*17	23	3	mm	-	-	-	
10	19	7	mm	827N	BA	827N	DG	*17	25	3	mm	-	-	-
10	22	7	mm	827N	BA	827N	DG	827N	BA	827N	DG	827N	BA	
10	24	7	mm	822N	B1	822N	DF	827N	BA	827N	DG	827N	BA	
10	26	7	mm	827N	BA	827N	DG	827N	-	827N	DG	827N	-	
10	30	10	mm	822N	-	822N	DF	827N	-	827N	DG	827N	-	
*12	16	3	mm	-	-	-	827N	-	827N	DG	-	-	-	
*12	18	3	mm	-	-	-	*18	24	3	mm	-	-	-	
*12	19	3	mm	-	-	-	*18	26	4	mm	-	-	-	
12	22	7	mm	827N	BA	827N	DG	827N	BA	827N	DG	827N	BA	
12	24	7	mm	827N	BA	827N	DG	827N	BA	827N	DG	827N	BA	
12	28	7	mm	827N	BA	827N	DG	827N	-	827N	DG	827N	-	
12	30	7	mm	827N	-	827N	DG	827N	-	827N	DG	827N	-	
12	32	7	mm	827N	BA	827N	DG	827N	-	827N	DG	827N	-	
*13	19	3	mm	-	-	-	*19	27	4	mm	-	-	-	
13	26	7	mm	827N	BA	827N	DG	822N	B1	822N	-	-	-	
13	30	10	mm	822N	-	822N	-	827S	-	827S	-	-	-	
*14	18	2.5	mm	-	-	-	827N	BA	827N	DG	827N	BA	827N	
*14	20	3	mm	-	-	-	827N	BA	827N	DG	827N	BA	827N	
*14	22	3	mm	-	-	-	827N	BA	827N	DG	827N	BA	827N	
14	24	7	mm	827N	BA	827N	DG	827N	BA	827N	DG	827N	BA	
14	26	7	mm	827N	BA	827N	DG	827N	BA	827N	DG	827N	BA	
14	28	7	mm	827N	BA	827N	-	827N	BA	827N	-	-	-	
14	30	7	mm	827N	BA	827N	-	827N	BA	827N	-	-	-	

*Narrow width - not spring-loaded.

NOTE:

- The above are standard stocked sizes and are of Nitrilic black rubber composition bonded on steel casings. They are single lipped, spring-loaded. Temperature range -15°F to +230°F. Sizes, compositions and types not shown above are available on a special order basis. Consult factory with specific requirements.
- The above interchange specifies style numbers equivalent to those listed in Column #2 and normally stocked.



OIL SEALS - METRIC DIMENSIONS (cont'd)

Consolidated No.				Interchange-Style No.			Consolidated No.				Interchange-Style No.		
d	D	B	Style No.	CFW	GOETZE	KACO	d	D	B	Style No.	CFW	GOETZE	KACO
*20 x 24 x 2.5mm	-	-	-	-	-	-	*26 x 34 x 4mm	-	-	-	-	-	-
*20 x 26 x 4mm	-	-	-	-	-	-	26 x 37 x 7mm	827N	BA	827N	BA	827N	DG
*20 x 28 x 4mm	-	-	-	-	-	-	26 x 42 x 10mm	827N	BA	827N	BA	827N	-
20 x 28 x 6mm	822N	-	822N	-	822N	-	26 x 45 x 10mm	822N	-	822N	-	822N	DF
20 x 30 x 7mm	827N	BA	827N	BA	827N	DG							
20 x 32 x 7mm	827N	BA	827N	BA	827N	DG	27 x 37 x 7mm	827N	-	827N	-	827N	-
20 x 35 x 7mm	827N	BA	827N	BA	827N	DG	27 x 42 x 10mm	827N	BA	827N	BA	827N	-
20 x 37 x 10mm	827N	BA	827N	BA	827N	DG	27 x 47 x 7mm	827N	BA	827N	BA	827N	-
20 x 40 x 7mm	827N	-	827N	-	827N	DG							
20 x 42 x 10mm	827N	BA	827N	BA	827N	DG	*28 x 35 x 4mm	-	-	-	-	-	-
20 x 47 x 7mm	827N	BA	827N	BA	827N	DG	*28 x 37 x 4mm	-	-	-	-	-	-
20 x 52 x 10mm	827N	-	827N	-	827N	DG	28 x 38 x 7mm	827N	BA	827N	BA	827N	DG
							28 x 40 x 7mm	827N	BA	827N	BA	827N	DG
*21 x 29 x 4mm	-	-	-	-	-	-	28 x 40 x 10mm	822N	-	822N	-	822N	-
							28 x 42 x 8mm	822N	B1	822N	B1	822N	-
*22 x 26 x 2.5mm	-	-	-	-	-	-	28 x 47 x 7mm	827N	BA	827N	BA	827N	DG
*22 x 28 x 4mm	-	-	-	-	-	-	28 x 52 x 7mm	827N	-	827N	-	827N	-
*22 x 30 x 4mm	-	-	-	-	-	-							
*22 x 30 x 4.2mm	-	-	-	-	-	-	*29 x 38 x 4mm	-	-	-	-	-	-
22 x 32 x 7mm	827N	BA	827N	BA	827N	DG							
22 x 35 x 7mm	827N	BA	827N	BA	827N	DG	*30 x 36 x 2.5mm	-	-	-	-	-	-
22 x 37 x 7mm	827N	BA	827N	BA	827N	-	*30 x 37 x 4mm	-	-	-	-	-	-
22 x 40 x 7mm	827N	-	827N	-	827N	-	*30 x 40 x 4mm	-	-	-	-	-	-
22 x 42 x 10mm	824N	B2	824N	B2	824N	DF	30 x 40 x 7mm	827N	BA	827N	BA	827N	DG
22 x 45 x 7mm	827N	BA	827N	BA	827N	-	30 x 42 x 7mm	827N	BA	827N	BA	827N	DG
22 x 47 x 10mm	827N	BA	827N	BA	827N	DG	30 x 45 x 8mm	827N	-	827N	-	827N	-
							30 x 45 x 10mm	827N	BA	827N	BA	827N	-
*24 x 32 x 4mm	-	-	-	-	-	-	30 x 47 x 7mm	827N	-	827N	-	827N	-
24 x 35 x 7mm	822N	-	822N	-	822N	-	30 x 47 x 10mm	827N	-	827N	-	827N	DG
24 x 37 x 7mm	827N	BA	827N	BA	827N	DG	30 x 48 x 8mm	827N	BA	827N	BA	827N	-
24 x 40 x 7mm	827N	-	827N	-	827N	-	30 x 48 x 10mm	822N	-	822N	-	822N	DF
24 x 42 x 10mm	822N	-	822N	-	822N	DF	30 x 50 x 7mm	827N	-	827N	-	827N	-
24 x 47 x 7mm	827N	-	827N	-	827N	DG	30 x 52 x 7mm	827N	-	827N	-	827N	-
							30 x 55 x 10mm	827N	-	827N	-	827N	DG
*25 x 31 x 2.5mm	-	-	-	-	-	-	30 x 62 x 7mm	827N	-	827N	-	827N	-
*25 x 32 x 4mm	-	-	-	-	-	-	30 x 72 x 10mm	822N	-	822N	-	822N	-
*25 x 32 x 5mm	-	-	-	-	-	-							
*25 x 33 x 4mm	-	-	-	-	-	-	*32 x 42 x 4mm	-	-	-	-	-	-
25 x 35 x 7mm	827N	BA	827N	BA	827N	DG	*32 x 45 x 4mm	-	-	-	-	-	-
25 x 36 x 7mm	827N	BA	827N	BA	827N	DG	32 x 45 x 7mm	827N	BA	827N	BA	827N	DG
25 x 37 x 7mm	827N	BA	827N	BA	827N	DG	32 x 47 x 7mm	827N	BA	827N	BA	827N	DG
25 x 38 x 7mm	827N	-	827N	-	827N	-	32 x 47 x 10mm	822N	B1	822N	B1	822N	-
25 x 40 x 7mm	827N	BA	827N	BA	827N	DG	32 x 48 x 7mm	827N	BA	827N	BA	827N	DG
25 x 42 x 10mm	827N	-	827N	-	827N	DG	32 x 50 x 8mm	827N	BA	827N	BA	827N	DG
25 x 45 x 10mm	827N	BA	827N	BA	827N	-	32 x 52 x 7mm	827N	BA	827N	BA	827N	DG
25 x 47 x 7mm	827N	-	827N	-	827N	DG	32 x 55 x 10mm	827N	BA	827N	BA	827N	DG
25 x 50 x 10mm	827N	-	827N	-	827N	DG	32 x 56 x 10mm	827N	-	827N	-	827N	DG
25 x 52 x 7mm	827N	BA	827N	BA	827N	DG	32 x 62 x 7mm	827N	BA	827N	BA	827N	-
25 x 62 x 8mm	827N	-	827N	-	827N	-							
25 x 62 x 10mm	827N	BA	827N	BA	827N	DG							

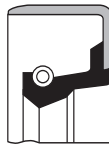
* Narrow width - not spring-loaded.

NOTE:

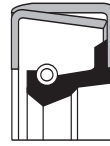
- 1.) The above are standard stocked sizes and are of Nitrilic black rubber composition bonded on steel casings. They are single lipped, spring-loaded. Temperature range -15°F. to +230°F. Sizes, compositions and types not shown above are available on a special order basis. Consult factory with specific requirements.
- 2.) The above interchange specifies style numbers equivalent to those listed in Column #2 and normally stocked.



Narrow Width



Style 822N
Ground Metal O.D.



Style 824N
Ground Metal
O.D. - Closed



Style 827N
Rubber O.D.

OIL SEALS - METRIC DIMENSIONS (cont'd)

Consolidated No.			Interchange-Style No.			Consolidated No.			Interchange-Style No.				
d	D	B	Style No.	CFW	GOETZE	KACO	d	D	B	Style No.	CFW	GOETZE	KACO
33	52	10	827N	-	827N	-	*42	49	3	-	-	-	-
34	46	8	827N	BA	827N	DG	*42	52	4	-	-	-	-
34	48	8	822N	-	822N	-	42	55	7	827N	BA	827N	DG
34	52	8	827N	BA	827N	DG	42	56	7	827N	BA	827N	DG
34	62	10	827N	BA	827N	DG	42	58	9	822N	B1	822N	DF
*35	41	2.5	-	-	-	-	42	60	10	827N	-	827N	DG
*35	42	4	-	-	-	-	42	62	7	827N	-	827N	-
*35	45	4	-	-	-	-	42	65	10	827N	-	827N	DG
35	45	7	827N	-	827N	-	42	68	12	824N	-	824N	-
35	47	7	827N	BA	827N	DG	42	72	12	822N	-	822N	DF
35	50	10	827N	BA	827N	DG	43	60	10	824N	B2	824N	-
35	52	7	827N	BA	827N	-	43	62	10	827N	BA	827N	-
35	55	10	827N	-	827N	DG							
35	56	10	822N	-	822N	DF	44	60	10	827N	BA	827N	-
35	58	10	827N	BA	827N	-	44	62	10	824N	B2	824N	-
35	62	10	827N	BA	827N	DG	44	65	10	827N	BA	827N	DG
35	68	6	827N	-	827N	-							
35	72	10	822N	-	822N	DF							
36	47	7	822N	B1	822N	DF	*45	52	4	-	-	-	-
36	52	7	827N	-	827N	DG	*45	55	4	-	-	-	-
36	54	7	827N	BA	827N	DG	45	55	7	822N	B1	822N	-
36	56	10	822N	-	822N	-	45	58	7	827N	BA	827N	DG
36	58	10	827N	-	827N	DG	45	60	7	827N	BA	827N	DG
36	62	7	827N	-	827N	-	45	62	10	827N	BA	827N	DG
36	68	10	827N	-	827N	DG	45	65	10	827N	BA	827N	DG
							45	68	10	827N	-	827N	DG
							45	70	10	822N	-	822N	-
							45	72	7	827N	-	827N	-
*37	47	4	-	-	-	-	45	75	10	827N	BA	827N	DG
37	52	9	822N	-	822N	DF	45	80	10	827N	-	827N	DG
							45	85	10	822N	-	822N	-
*38	48	4	-	-	-	-							
38	50	7	827N	BA	827N	DG	46	65	10	824N	B2	824N	-
38	52	7	827N	BA	827N	-							
38	54	10	827N	BA	827N	DG	*48	55	3.5	-	-	-	-
38	55	7	827N	-	827N	DG	48	62	10	827N	-	827N	-
38	56	10	822N	-	822N	DF	48	65	10	827N	BA	827N	DG
38	60	10	822N	-	822N	DF	48	68	10	827S	-	827S	-
38	62	10	827N	BA	827N	DG	48	70	10	827N	BA	827N	-
38	65	10	827N	-	827N	-	48	72	7	827N	BA	827N	DG
38	72	12	824N	-	824N	-							
*40	47	4	-	-	-	-	*50	58	4	-	-	-	-
*40	50	4	-	-	-	-	*50	62	5	-	-	-	-
40	52	7	827N	BA	827N	DG	50	62	10	822N	B1	822N	-
40	55	7	827N	-	827N	DG	50	65	8	827N	BA	827N	DG
40	56	10	827N	BA	827N	DG	50	68	10	827N	BA	827N	DG
40	58	10	827N	-	827N	-	50	70	10	827N	-	827N	DG
40	60	10	827N	BA	827N	DG	50	72	10	827N	BA	827N	DG
40	62	7	827N	-	827N	DG	50	75	12	827N	-	827N	DG
40	65	10	827N	BA	827N	DG	50	80	10	822N	-	822N	DF
40	68	12	824N	-	824N	-	50	85	13	824N	-	824N	-
40	72	7	827N	-	827N	DG	50	90	13	822N	-	822N	DF
40	72	10	827N	-	827N	-							
40	80	10	827N	-	827N	DG							
40	90	12	822N	B1	822N	-							

*Narrow width - not spring-loaded.

NOTE:

- 1.) The above are standard stocked sizes and are of Nitrilic black rubber composition bonded on steel casings. They are single lipped, spring-loaded. Temperature range -15°F. to +230°F. Sizes, compositions and types not shown above are available on a special order basis. Consult factory with specific requirements.
- 2.) The above interchange specifies style numbers equivalent to those listed in Column #2 and normally stocked.



OIL SEALS - METRIC DIMENSIONS (cont'd)

Consolidated No.			Interchange-Style No.			Consolidated No.			Interchange-Style No.				
d	D	B	Style No.	CFW	GOETZE	KACO	d	D	B	Style No.	CFW	GOETZE	KACO
*52 x 59 x 3.5mm	-	-	-	-	-	-	63 x 85 x 10mm	824N	-	824N	-	-	-
52 x 68 x 8mm	827N	BA	827N	BA	827N	DG	64 x 80 x 8mm	827N	-	827N	-	827N	DG
52 x 69 x 10mm	827N	-	827N	-	827N	-	64 x 90 x 13mm	822N	-	822N	-	822N	-
52 x 70 x 10mm	822N	-	822N	-	822N	-	65 x 80 x 8mm	827N	BA	827N	-	827N	DG
52 x 72 x 10mm	827N	BA	827N	BA	827N	DG	65 x 85 x 10mm	827N	-	827N	-	827N	DG
52 x 75 x 12mm	827N	-	827N	-	827N	-	65 x 90 x 10mm	827N	BA	827N	-	827N	DG
52 x 80 x 10mm	827N	-	827N	-	827N	DG	65 x 100 x 10mm	827N	-	827N	-	827N	DG
53 x 68 x 10mm	827N	-	827N	-	827N	DG	68 x 85 x 10mm	827N	-	827N	-	827N	-
53 x 73 x 7mm	822N	-	822N	-	822N	-	68 x 90 x 10mm	827N	BA	827N	-	827N	DG
54 x 70 x 8mm	822N	-	822N	-	822N	-	68 x 100 x 10mm	827N	BA	827N	-	827N	-
54 x 80 x 13mm	822N	-	822N	-	822N	-	70 x 85 x 8mm	827N	BA	827N	-	827N	DG
54 x 82 x 10mm	827N	-	827N	-	827N	DG	70 x 90 x 10mm	827N	BA	827N	-	827N	DG
55 x 68 x 8mm	827N	BA	827N	BA	827N	DG	70 x 95 x 13mm	822N	-	822N	-	822N	DF
55 x 70 x 8mm	827N	BA	827N	BA	827N	DG	70 x 100 x 10mm	827N	BA	827N	-	827N	-
55 x 72 x 10mm	827N	BA	827N	BA	827N	DG	70 x 105 x 13mm	824N	-	824N	-	824N	-
55 x 75 x 10mm	827N	BA	827N	BA	827N	DG	70 x 110 x 13mm	827N	-	827N	-	827N	-
55 x 78 x 12mm	827N	-	827N	-	827N	-	72 x 90 x 10mm	822N	-	822N	-	822N	-
55 x 78 x 13mm	824N	-	824N	-	824N	-	72 x 95 x 10mm	822N	-	822N	-	822N	-
55 x 80 x 10mm	822N	-	822N	-	822N	DF	72 x 100 x 13mm	824N	-	824N	-	824N	-
55 x 85 x 10mm	824N	B2	824N	B2	824N	-	74 x 100 x 13mm	822N	-	822N	-	822N	DF
55 x 90 x 13mm	824N	B2	824N	B2	824N	-	75 x 90 x 8mm	827N	BA	827N	-	827N	-
56 x 72 x 8mm	827N	BA	827N	BA	827N	-	75 x 95 x 10mm	827N	-	827N	-	827N	DG
56 x 80 x 10mm	824N	B2	824N	B2	824N	-	75 x 100 x 10mm	827N	BA	827N	-	827N	-
57 x 72 x 10mm	824N	B2	824N	B2	824N	-	75 x 105 x 13mm	824N	-	824N	-	824N	-
57 x 90 x 13mm	824N	-	824N	-	824N	-	75 x 110 x 13mm	827N	-	827N	-	827N	-
*58 x 65 x 3.5mm	-	-	-	-	-	-	75 x 115 x 13mm	824N	-	824N	-	824N	-
58 x 72 x 8mm	827N	BA	827N	BA	827N	DG	80 x 100 x 10mm	827N	BA	827N	-	827N	DG
58 x 75 x 12mm	822N	-	822N	-	822N	DF	80 x 105 x 13mm	827N	BA	827N	-	827N	-
58 x 78 x 13mm	824N	B2	824N	B2	824N	-	80 x 110 x 13mm	822N	-	822N	-	822N	DF
58 x 80 x 10mm	822N	-	822N	-	822N	-	80 x 120 x 13mm	824N	-	824N	-	824N	-
58 x 85 x 13mm	824N	-	824N	-	824N	-	82 x 105 x 13mm	822N	-	822N	-	822N	DF
58 x 90 x 13mm	822N	-	822N	-	822N	DF	82 x 110 x 13mm	824N	-	824N	-	824N	-
60 x 75 x 8mm	827N	BA	827N	BA	827N	DF	85 x 100 x 13mm	822N	-	822N	-	822N	-
60 x 78 x 13mm	822N	-	822N	-	822N	-	85 x 105 x 13mm	824N	B2	824N	-	824N	-
60 x 80 x 10mm	827N	BA	827N	BA	827N	DG	85 x 110 x 13mm	827N	BA	827N	-	827N	-
60 x 85 x 10mm	827N	BA	827N	BA	827N	-	85 x 115 x 13mm	822N	-	822N	-	822N	-
60 x 90 x 10mm	827N	BA	827N	BA	827N	DG	85 x 120 x 13mm	822N	-	822N	-	822N	DF
60 x 95 x 13mm	824N	-	824N	-	824N	-							
62 x 75 x 10mm	822N	-	822N	-	822N	-							
62 x 80 x 10mm	827N	BA	827N	BA	827N	-							
62 x 85 x 10mm	827N	BA	827N	BA	827N	-							
62 x 90 x 13mm	822N	-	822N	-	822N	-							

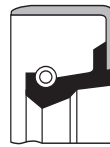
*Narrow width - not spring loaded.

NOTE:

- 1.) The above are standard stocked sizes and are of Nitrilic black rubber composition bonded on steel casings. They are single lipped, spring-loaded. Temperature range -15°F. to +230°F. Sizes, compositions and types not shown above are available on a special order basis. Consult factory with specific requirements.
- 2.) The above interchange specifies style numbers equivalent to those listed in Column #2 and normally stocked.



Narrow Width



Style 822N
Ground Metal O.D.



Style 824N
Ground Metal
O.D.- Closed



Style 827N
Rubber O.D.

OIL SEALS - METRIC DIMENSIONS (cont'd)

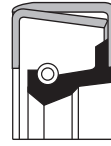
Consolidated No.			Interchange-Style No.			Consolidated No.			Interchange-Style No.				
d	D	B	Style No.	CFW	GOETZE	KACO	d	D	B	Style No.	CFW	GOETZE	KACO
88 x 110 x 13mm			822N	-	822N	DF	120 x 140 x 13mm			822N	B1	822N	DF
88 x 120 x 13mm			824N	-	824N	-	120 x 145 x 15mm			824N	-	824N	-
							120 x 150 x 12mm			827N	-	827N	-
							120 x 160 x 15mm			822N	-	822N	DF
90 x 110 x 12mm			827N	BA	827N	-	125 x 140 x 13mm			822N	-	822N	-
90 x 115 x 13mm			822N	-	822N	DF	125 x 150 x 13mm			827N	-	827N	-
90 x 120 x 13mm			827N	BA	827N	DG	125 x 160 x 15mm			824N	-	824N	-
90 x 125 x 13mm			822N	-	822N	-							
92 x 110 x 10mm			824N	-	824N	-	128 x 150 x 15mm			822N	B1	822N	DF
92 x 120 x 13mm			824N	-	824N	-							
95 x 110 x 10mm			824N	-	824N	-	130 x 150 x 14mm			824N	-	824N	-
95 x 115 x 13mm			824N	-	824N	-	130 x 160 x 13mm			822N	-	822N	-
95 x 120 x 13mm			827N	BA	827N	DG	130 x 165 x 15mm			822N	-	822N	-
95 x 125 x 13mm			822N	-	822N	-	130 x 170 x 15mm			827N	-	827N	-
95 x 130 x 13mm			822N	-	822N	DF							
96 x 112 x 10mm			827N	-	827N	-	132 x 160 x 15mm			822N	-	822N	-
							135 x 160 x 13mm			822N	-	822N	DF
98 x 120 x 13mm			824N	-	824N	-	135 x 170 x 15mm			824N	-	824N	-
98 x 125 x 12mm			827S	-	827S	-	135 x 180 x 15mm			824S	-	824S	-
100 x 115 x 9mm			822N	B1	822N	DF	140 x 160 x 13mm			822N	B1	822N	-
100 x 115 x 10mm			822N	-	822N	-	140 x 165 x 12mm			827N	-	827N	-
100 x 120 x 10mm			827N	BA	827N	-	140 x 170 x 15mm			827N	-	827N	-
100 x 120 x 13mm			824N	-	824N	-	140 x 180 x 15mm			824N	-	824N	-
100 x 125 x 13mm			822N	-	822N	DF							
100 x 130 x 13mm			822N	-	822N	DF	144 x 160 x 12mm			827N	-	827N	-
100 x 140 x 13mm			824N	-	824N	-	144 x 180 x 15mm			822N	-	822N	DF
102 x 130 x 13mm			827N	-	827N	-	145 x 165 x 13mm			824N	B2	824N	-
							145 x 170 x 15mm			822N	-	822N	-
104 x 125 x 10mm			827N	BA	827N	-	145 x 175 x 15mm			824N	-	824N	-
							145 x 180 x 15mm			824N	-	824N	-
105 x 125 x 13mm			822N	-	822N	DF							
105 x 130 x 13mm			827N	-	827N	-	148 x 170 x 15mm			827N	BA	827N	DG
105 x 140 x 13mm			822N	-	822N	DF							
							150 x 168 x 12mm			827N	-	827N	-
107 x 130 x 13mm			822N	-	822N	-	150 x 170 x 15mm			827N	-	827N	-
							150 x 180 x 13mm			827N	-	827N	DG
108 x 130 x 13mm			824N	-	824N	-							
							155 x 180 x 15mm			822N	-	822N	-
110 x 130 x 13mm			827N	-	827N	DG	155 x 190 x 15mm			824N	-	824N	-
110 x 140 x 13mm			822N	-	822N	DF							
110 x 150 x 15mm			824N	B2	824N	-	160 x 180 x 13mm			822N	-	822N	DF
							160 x 185 x 10mm			824N	-	824N	-
112 x 140 x 13mm			827N	-	827N	-	160 x 190 x 15mm			827N	-	827N	-
114 x 140 x 13mm			822N	-	822N	DF	165 x 190 x 13mm			827N	BA	827N	DG
115 x 135 x 13mm			822N	B1	822N	-	170 x 190 x 15mm			822S	-	822S	-
115 x 140 x 13mm			827N	-	827N	-	170 x 200 x 15mm			827N	-	827N	-
115 x 150 x 15mm			824N	-	824N	-							
							175 x 200 x 15mm			822N	-	822N	-
							178 x 200 x 15mm			824N	-	824N	-

NOTE:

- The above are standard stocked sizes and are of Nitrilic black rubber composition bonded on steel casings. They are single lipped, spring-loaded. Temperature range -15°F. to +230°F. Sizes, compositions and types not shown above are available on a special order basis. Consult factory with specific requirements.
- The above interchange specifies style number equivalent to those listed in Column #2 and normally stocked.



Style 822N
Ground Metal O.D.



Style 824N
Ground Metal
O.D.- Closed



Style 827N
Rubber O.D.

OIL SEALS - METRIC DIMENSIONS (cont'd)

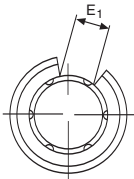
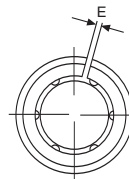
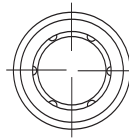
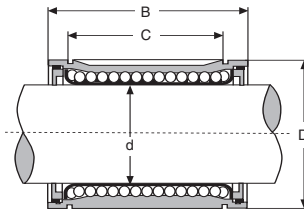
Consolidated
No.

Interchange-Style No.

d	D	B	Style No.	CFW	GOETZE	KACO
180 x 200 x 15mm			824N	B2	824N	-
180 x 210 x 15mm			822N	-	822N	-
180 x 215 x 16mm			822N	B1	822N	DF
180 x 220 x 16mm			824N	-	824N	-
185 x 210 x 13mm			827N	BA	827N	DG
185 x 215 x 16mm			824N	-	824N	-
190 x 220 x 16mm			824N	-	824N	-
190 x 230 x 16mm			824N	B2	824N	-
200 x 230 x 16mm			822N	B1	822N	-
200 x 240 x 15mm			822N	-	822N	-
200 x 250 x 16mm			824N	-	824N	-
210 x 240 x 15mm			824N	-	824N	-
210 x 250 x 16mm			824N	-	824N	-
220 x 250 x 16mm			822N	-	822N	-
225 x 250 x 13mm			824N	-	824N	-
230 x 270 x 16mm			824N	-	824N	-
240 x 270 x 16mm			824N	-	824N	-
250 x 280 x 16mm			824N	B2	824N	-
250 x 290 x 16mm			824N	-	824N	-
260 x 290 x 16mm			824N	-	824N	-
270 x 310 x 16mm			824N	-	824N	-
280 x 310 x 16mm			824N	-	824N	-
280 x 320 x 16mm			824N	-	824N	-
300 x 340 x 16mm			824N	-	824N	-
310 x 350 x 20mm			824N	-	824N	-
320 x 360 x 18mm			827N	-	827N	-
325 x 375 x 20mm			824N	-	824N	-
340 x 372 x 16mm			824N	-	824N	-
350 x 380 x 18mm			824N	-	824N	-
360 x 400 x 20mm			824N	-	824N	-
380 x 420 x 20mm			824N	-	824N	-
400 x 450 x 20mm			827N	-	827N	-
420 x 460 x 20mm			824N	-	824N	-

NOTE:

- 1.) The above are standard stocked sizes and are of Nitrilic black rubber composition bonded on steel casings. They are single lipped, spring-loaded. Temperature range -15°F. to +230°F. Sizes, compositions and types not shown above are available on a special order basis. Consult factory with specific requirements.
- 2.) The above interchange specifies style number equivalent to those listed in Column #2 and normally stocked.



"ADJ" - Adjustable

"OPN" - Open

LINEAR RECIRCULATING BALL BEARINGS - INCH DIMENSIONS

Consolidate No.	Dimensions (Inch)					No. of Circuits	Approx. Wgt. (lbs.)	Interchange			
	d	D	B	C	E			Barден	Heim	INA	Thomson
A-258	.1250	.3125	.5000	.3681	-	4	.006	-	ILBB-125	-	-
A-3610	.1875	.3750	.6250	.4311	-	4	.008	-	ILBB-187	-	-
A-4812	.2500	.5000	.7500	.5110	-	3	.020	L-4	LBB-250	KBZ 04	A-4812
A-61014	.3750	.6250	.8750	.6360	-	4	.060	L-6	LBB-375	KBZ 06	A-61014
A-81420	.5000	.8750	1.2500	.9630	-	4	.080	L-8	LBB-500	KBZ 08	A-81420
A-101824	.6250	1.1250	1.5000	1.1040	-	4	.160	L-10	LBB-625	KBZ 10	A-101824
A-122026	.7500	1.2500	1.6250	1.1660	-	5	.210	L-12	LBB-750	KBZ 12	A-122026
A-162536	1.0000	1.5625	2.2500	1.7550	-	5	.380	L-16	LBB-1000	KBZ 16	A-162536
A-203242	1.2500	2.0000	2.6250	2.0050	-	6	1.100	L-20	LBB-1250	KBZ 20	A-203242
A-243848	1.5000	2.3750	3.0000	2.4120	-	6	1.430	L-24	LBB-1500	KBZ 24	A-243848
A-324864	2.0000	3.0000	4.0000	3.1920	-	6	2.750	L-32	LBB-2000	KBZ 32	A-324864
A-406080	2.5000	3.7500	5.0000	3.9760	-	6	5.500	L-40	LBB-2500	-	A-406080
A-487296	3.0000	4.5000	6.0000	4.7260	-	6	9.500	L-48	LBB-3000	-	A-487296
A-6496128	4.0000	6.0000	8.0000	6.2580	-	6	20.500	L-64	LBB-4000	-	A-6496128

NOTE:

1.) Prefix "XA" - Extra Precision Grade also available.

ADJUSTABLE

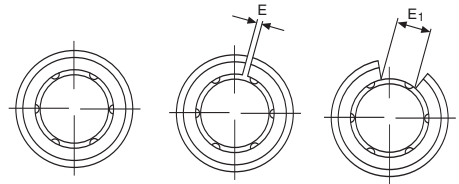
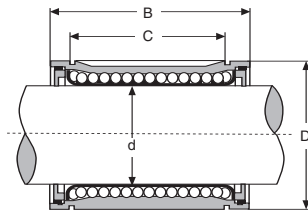
	d	D	B	C	E						
ADJ-81420	.5000	.8750	1.2500	.9630	.0625	4	.080	LA-8	ADJ-500	-	ADJ-81420
ADJ-101824	.6250	1.1250	1.5000	1.1040	.0937	4	.160	LA-10	ADJ-625	-	ADJ-101824
ADJ-122026	.7500	1.2500	1.6250	1.1660	.0937	5	.210	LA-12	ADJ-750	-	ADJ-122026
ADJ-162536	1.0000	1.5625	2.2500	1.7550	.0937	5	.380	LA-16	ADJ-1000	-	ADJ-162536
ADJ-203242	1.2500	2.0000	2.6250	2.0050	.0937	6	1.100	LA-20	ADJ-1250	-	ADJ-203242
ADJ-243848	1.5000	2.3750	3.0000	2.4120	.1250	6	1.430	LA-24	ADJ-1500	-	ADJ-243848
ADJ-324864	2.0000	3.0000	4.0000	3.1920	.1250	6	2.750	LA-32	ADJ-2000	-	ADJ-324864
ADJ-406080	2.5000	3.7500	5.0000	3.9760	.1250	6	5.500	LA-40	ADJ-2500	-	ADJ-406080
ADJ-487296	3.0000	4.5000	6.0000	4.7260	.1250	6	9.500	LA-48	ADJ-3000	-	ADJ-487296
ADJ-6496128	4.0000	6.0000	8.0000	6.2580	.1250	6	20.500	LA-64	ADJ-4000	-	ADJ-6496128

OPEN

	d	D	B	C	E1						
OPN-81420	.5000	.8750	1.2500	.9630	.3125	3	.070	LO-8	OPN-500	KBZ 08 OP	OPN-81420
OPN-101824	.6250	1.1250	1.5000	1.1040	.3750	3	.110	LO-10	OPN-625	KBZ 10 OP	OPN-101824
OPN-122026	.7500	1.2500	1.6250	1.1660	.4375	4	.170	LO-12	OPN-750	KBZ 12 OP	OPN-122026
OPN-162536	1.0000	1.5625	2.2500	1.7550	.5625	4	.320	LO-16	OPN-1000	KBZ 16 OP	OPN-162536
OPN-203242	1.2500	2.0000	2.6250	2.0050	.6250	5	.900	LO-20	OPN-1250	KBZ 20 OP	OPN-203242
OPN-243848	1.5000	2.3750	3.0000	2.4120	.7500	5	1.120	LO-24	OPN-1500	KBZ 24 OP	OPN-243848
OPN-324864	2.0000	3.0000	4.0000	3.1920	1.0000	5	2.160	LO-32	OPN-2000	KBZ 32 OP	OPN-324864
OPN-406080	2.5000	3.7500	5.0000	3.9760	1.2500	5	4.240	LO-40	OPN-2500	-	OPN-406080
OPN-487296	3.0000	4.5000	6.0000	4.7260	1.5000	5	7.330	LO-48	OPN-3000	-	OPN-487296
OPN-6496128	4.0000	6.0000	8.0000	6.2580	2.0000	5	17.250	LO-64	OPN-4000	-	OPN-6496128

NOTE:

1.) Also available sealed. Add suffix - "2RS". Consult factory for availability.
 2.) Also available in stainless steel. Consult factory for availability.



KB..N- Adjustable

KB..S- Open

LINEAR RECIRCULATING BALL BEARINGS - METRIC DIMENSIONS

Consolidated No.	Dimensions (Metric)					No. of Circuits	Approx. Wgt. (lbs.)	Interchange			
	d	D	B	C	E			FAG	INA	STAR	SKF
KB-5	5	12	22	14.5	-	4	.020	LAA5x12x22	-	0600-305-00	LBAR 5
KB-8	8	16	25	16.5	-	4	.040	LAA8x16x25A	-	0600-308-00	LBAR 8
KB-12	12	22	32	22.9	-	4	.090	LAA12x22x32	KB 1232	0600-012-00	-
KB-16	16	26	36	24.9	-	4	.110	LAA16x26x36	KB 1636	0600-016-00	-
KB-20	20	32	45	31.5	-	5	.220	LAA20x32x45	KB 2045	0600-020-00	-
KB-25	25	40	58	44.1	-	6	.420	LAA25x40x58	KB 2558	0600-025-00	-
KB-30	30	47	68	52.1	-	6	.700	LAA30x47x68	KB 3068	0600-030-00	-
KB-40	40	62	80	60.6	-	6	1.370	LAA40x62x80	KB 4080	0600-040-00	-
KB-50	50	75	100	77.6	-	6	2.500	LAA50x75x100	KB 50100	0600-050-00	-
KB-60	60	90	125	101.7	-	6	4.640	-	-	0600-060-00	-

ADJUSTABLE

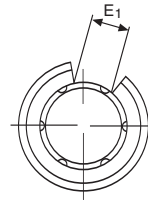
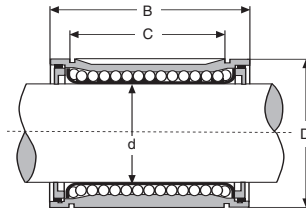
	d	D	B	C	E						
KB-5N	5	12	22	14.5	1.0	4	.020	-	-	0610-305-00	LBAS 5
KB-8N	8	16	25	16.5	1.0	4	.040	LAG8x16x25A	-	0610-308-00	LBAS 8
KB-12N	12	22	32	22.9	1.5	4	.090	LAG12x22x32	KBS 1232	0610-012-00	-
KB-16N	16	26	36	24.9	1.5	4	.110	LAG16x26x36	KBS 1636	0610-016-00	-
KB-20N	20	32	45	31.5	2.0	5	.220	LAG20x32x45	KBS 2045	0610-020-00	-
KB-25N	25	40	58	44.1	2.0	6	.420	LAG25x40x58	KBS 2558	0610-025-00	-
KB-30N	30	47	68	52.1	2.0	6	.700	LAG30x47x68	KBS 3068	0610-030-00	-
KB-40N	40	62	80	60.6	3.0	6	1.370	LAG40x62x80	KBS 4080	0610-040-00	-
KB-50N	50	75	100	77.6	3.0	6	2.500	LAG50x75x100	KBS 50100	0610-050-00	-
KB-60N	60	90	125	101.7	3.0	6	4.640	-	-	0610-060-00	LBAS 60
KB-80N	80	120	165	133.7	3.0	6	10.340	-	-	0610-080-00	LBAS 80

OPEN

	d	D	B	C	E1						
KB-12S	12	22	32	22.9	7.5	3	.070	LAN12x22x32A	KBO 1232	0630-012-00	-
KB-16S	16	26	36	24.9	10.0	3	.090	LAN16x26x36A	KBO 1636	0630-016-00	-
KB-20S	20	32	45	31.5	10.0	4	.170	LAN20x32x45A	KBO 2035	0630-020-00	-
KB-25S	25	40	58	44.1	12.5	5	.330	LAN25x40x58A	KBO 2558	0630-025-00	-
KB-30S	30	47	68	52.1	12.5	5	.570	LAN30x47x68A	KBO 3068	0630-030-00	LBAT 30
KB-40S	40	62	80	60.6	16.8	5	1.140	LAN40x62x80A	KBO 4080	0630-040-00	-
KB-50S	50	75	100	77.6	21.0	5	2.090	LAN50x75x100A	KBO 50100	0630-050-00	-
KB-60S	60	90	125	101.7	27.2	5	3.870	-	-	0630-060-00	LBAT 60
KB-80S	80	120	165	133.7	30.3	5	8.620	-	-	0630-080-00	LBAT 80

NOTE:

- 1.) Single and double sealed bearings are also available in all types. Add suffix "D" for single sealed. Add suffix "2D" for double sealed.
- 2.) Also available in stainless steel. Consult factory for availability.



SUP-... OPN
Open

EXTRA CAPACITY LINEAR RECIRCULATING BALL BEARINGS - INCH DIMENSIONS

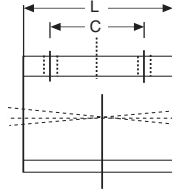
Consolidated No.	Dimensions (Inch)				E1	No. of Circuits	Approx. Wgt. (lbs)	Interchange			
	d	D	B	C				Barden	INA	Thomson	NB
SUP-4	.2500	.5000	.7500	.4370	-	4	.008	FL-4	KNZ 04	SUPER-4	TW-4
SUP-6	.3750	.6250	.8750	.6250	-	4	.013	FL-6	KNZ 06	SUPER-6	TW-6
SUP-8	.5000	.8750	1.2500	.9402	-	4	.042	FL-8	KNZ 08	SUPER-8	TW-8
SUP-10	.6250	1.1250	1.5000	1.0000	-	5	.101	FL-10	KNZ 10	SUPER-10	TW-10
SUP-12	.7500	1.2500	1.6250	1.1602	-	6	.123	FL-12	KNZ 12	SUPER-12	TW-12
SUP-16	1.0000	1.5625	2.2500	1.7500	-	6	.265	FL-16	KNZ 16	SUPER-16	TW-16
SUP-20	1.2500	2.0000	2.6250	1.8750	-	6	.485	-	KNZ 20	SUPER-20	TW-20
SUP-24	1.5000	2.3750	3.0000	2.2502	-	6	.750	-	KNZ 24	SUPER-24	TW-24
SUP-32	2.0000	3.0000	4.0000	3.0000	-	6	1.389	-	KNZ 32	SUPER-32	TW-32

OPEN

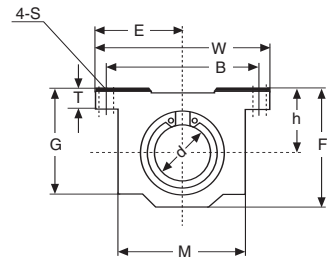
SUP-8-OPN	.5000	.8750	1.2500	.9402	.3130	3	.033	-	KNZ 08 OP	SUPER-8-OPN	TW-8-OP
SUP-10-OPN	.6250	1.1250	1.5000	1.0000	.3750	4	.082	-	KNZ 10 OP	SUPER-10-OPN	TW-10-OP
SUP-12-OPN	.7500	1.2500	1.6250	1.1602	.4380	5	.101	FLO-12	KNZ 12 OP	SUPER-12-OPN	TW-12-OP
SUP-16-OPN	1.0000	1.5625	2.2500	1.7500	.5630	5	.220	FLO-16	KNZ 16 OP	SUPER-16-OPN	TW-16-OP
SUP-20-OPN	1.2500	2.0000	2.6250	1.8750	.6250	5	.397	-	KNZ 20 OP	SUPER-20-OPN	TW-20-OP
SUP-24-OPN	1.5000	2.3750	3.0000	2.2502	.7500	5	.617	-	KNZ 24 OP	SUPER-24-OPN	TW-24-OP
SUP-32-OPN	2.0000	3.0000	4.0000	3.0000	1.0000	5	1.146	-	KNZ 32 OP	SUPER-32-OPN	TW-32-OP

NOTE:

- 1.) Also available double sealed - add suffix "2RS"
- 2.) Seals do not change the length



Self-aligning 1°
in all directions



LINEAR RECIRCULATING BALL BEARINGS PILLOW BLOCKS - INCH DIMENSIONS

Consolidated
No.

Dimensions
(Inch)

	d	h	E	W	L	F	T	G	M	h1
SPB-4	.2500	.4375	.8125	1.6250	1.1875	.8125	.1875	.7500	1.0000	-
SPB-6	.3750	.5000	.8750	1.7500	1.3125	.9375	.1875	.8750	1.1250	-
SPB-8	.5000	.6875	1.0000	2.0000	1.6875	1.2500	.2500	1.1250	1.3750	-
SPB-10	.6250	.8750	1.2500	2.5000	1.9375	1.6250	.2812	1.4375	1.7500	-
SPB-12	.7500	.9375	1.3750	2.7500	2.0625	1.7500	.3125	1.5625	1.8750	-
SPB-16	1.0000	1.1875	1.6250	3.2500	2.8125	2.1875	.3750	1.9375	2.3750	-
SPB-20	1.2500	1.5000	2.0000	4.0000	3.6250	2.8125	.4375	2.5000	3.0000	-
SPB-24	1.5000	1.7500	2.3750	4.7500	4.0000	3.2500	.5000	2.8750	3.5000	-
SPB-32	2.0000	2.1250	3.0000	6.0000	5.0000	4.0625	.6250	3.6250	4.5000	-

ADJUSTABLE

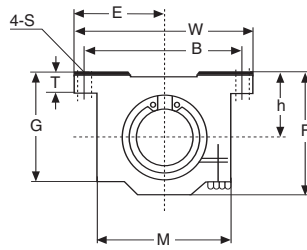
SPB-8-ADJ	.5000	.6875	1.0000	2.0000	1.6875	1.2500	.2500	1.1250	1.3750	-
SPB-10-ADJ	.6250	.8750	1.2500	2.5000	1.9375	1.6250	.2812	1.4375	1.7500	-
SPB-12-ADJ	.7500	.9375	1.3750	2.7500	2.0625	1.7500	.3125	1.5625	1.8750	-
SPB-16-ADJ	1.0000	1.1875	1.6250	3.2500	2.8125	2.1875	.3750	1.9375	2.3750	-
SPB-20-ADJ	1.2500	1.5000	2.0000	4.0000	3.6250	2.8125	.4375	2.5000	3.0000	-
SPB-24-ADJ	1.5000	1.7500	2.3750	4.7500	4.0000	3.2500	.5000	2.8750	3.5000	-
SPB-32-ADJ	2.0000	2.1250	3.0000	6.0000	5.0000	4.0625	.6250	3.6250	4.5000	-

OPEN

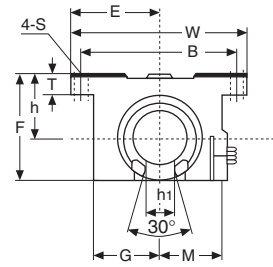
SPB-8-OPN	.5000	.6875	1.0000	2.0000	1.5000	1.1000	.2500	.6875	.9050	.3437
SPB-10-OPN	.6250	.8750	1.2500	2.5000	1.7500	1.3750	.2812	.8750	1.0950	.3750
SPB-12-OPN	.7500	.9375	1.3750	2.7500	1.8750	1.5350	.3125	.9375	1.1610	.4375
SPB-16-OPN	1.0000	1.1875	1.6250	3.2500	2.6250	1.9750	.3750	1.1875	1.4570	.4650
SPB-20-OPN	1.2500	1.5000	2.0000	4.0000	3.3750	2.4850	.4375	1.5000	1.8310	.6250
SPB-24-OPN	1.5000	1.7500	2.3750	4.7500	3.7500	2.9100	.5000	1.7500	2.0870	.7500
SPB-32-OPN	2.0000	2.1250	3.0000	6.0000	4.7500	3.6600	.6250	2.2500	2.6380	1.0000

NOTE:

1.) Load ratings may vary between manufacturers.

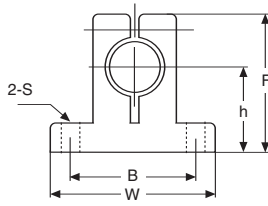


ADJUSTABLE

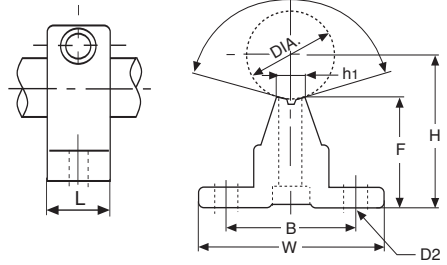


OPEN

O	B	C	S	Approx. Wgt. (lbs.)	Interchange		
					Barden	Thomson	NB
-	1.3125	.7500	.1562	.100	FPB-4	SPB-4	TWA 4UU
-	1.4375	.8750	.1562	.140	FPB-6	SPB-6	TWA 6UU
-	1.6875	1.0000	.1562	.290	FPB-8	SPB-8	TWA 8UU
-	2.1250	1.1250	.1875	.530	FPB-10	SPB-10	TWA 10UU
-	2.3750	1.2500	.1875	.640	FPB-12	SPB-12	TWA 12UU
-	2.8750	1.7500	.2187	1.360	FPB-16	SPB-16	TWA 16UU
-	3.5000	2.0000	.2187	2.870	-	SPB-20	TWA 20UU
-	4.1250	2.5000	.2812	4.190	-	SPB-24	TWA 24UU
-	5.2500	3.2500	.4062	7.940	-	SPB-32	TWA 32UU
-	1.6875	1.000	.1562	.290	-	SPB-8-ADJ	TWJ 8UU
-	2.1250	1.125	.1875	.530	-	SPB-10-ADJ	TWJ 10UU
-	2.3750	1.250	.1875	.640	-	SPB-12-ADJ	TWJ 12UU
-	2.8750	1.750	.2187	1.360	-	SPB-16-ADJ	TWJ 16UU
-	3.5000	2.000	.2187	2.870	-	SPB-20-ADJ	TWJ 20UU
-	4.1250	2.500	.2812	4.190	-	SPB-24-ADJ	TWJ 24UU
-	5.2500	3.250	.4062	7.940	-	SPB-32-ADJ	TWJ 32UU
30°	1.6875	1.000	.1562	.220	-	SPB-8-OPN	TWD 8UU
30°	2.1250	1.125	.1875	.410	-	SPB-10-OPN	TWD 10UU
30°	2.3750	1.250	.1875	.520	FPB-12-OPN	SPB-12-OPN	TWD 12UU
30°	2.8750	1.750	.2187	1.170	FPB-16-OPN	SPB-16-OPN	TWD 16UU
30°	3.5000	2.000	.2187	2.380	-	SPB-20-OPN	TWD 20UU
30°	4.1250	2.500	.2817	3.570	-	SPB-24-OPN	TWD 24UU
30°	5.2500	3.250	.4062	6.840	-	SPB-32-OPN	TWD 32UU



End Shaft Support



Shaft Support Rail

LINEAR RECIRCULATING BALL BEARING - END SHAFT SUPPORT

Consolidated No.	Nominal Shaft Dia. (inch)	Dimensions (inch)						Approx. Wgt. (lbs)	Interchange	
		h	W	L	F	B	S		Thomson	NB
WH-4A	.2500	.6875	1.5000	.5000	1.0625	1.1250	.1562	.033	-	WH 4A
WH-6A	.3750	.7500	1.6250	.5625	1.1875	1.2500	.1562	.044	-	WH 6A
WH-8A	.5000	1.0000	2.0000	.6250	1.6250	1.5000	.1875	.075	SB8	WH 8A
WH-10A	.6250	1.0000	2.5000	.6875	1.7500	1.8750	.2187	.106	SB10	WH 10A
WH-12A	.7500	1.2500	2.5000	.7500	2.0625	2.0000	.2187	.156	SB12	WH 12A
WH-16A	1.0000	1.5000	3.0625	1.0000	2.5000	2.5000	.2817	.294	SB16	WH 16A
WH-20A	1.2500	1.7500	3.7500	1.1250	3.0000	3.0000	.3460	.531	SB20	WH 20A
WH-24A	1.5000	2.0000	4.3750	1.2500	3.4375	3.5000	.3460	.725	SB24	WH 24A
WH-32A	2.0000	2.5000	5.5000	1.5000	7.3750	4.5000	.4062	1.400	SB32	WH 32A

NOTE:

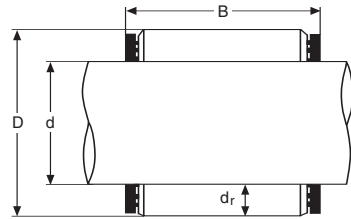
- 1.) Precision end shaft supports are made of machined die cast aluminum.
- 2.) Some non-critical dimensions may vary between manufacturers.

LINEAR RECIRCULATING BALL BEARING - SHAFT SUPPORT RAIL

Consolidated No.	Nominal Shaft Dia. (inch)	Dimensions (inch)						Approx. Wgt. (lbs)	Interchange	
		H	W	F	h1	B	D2		Thomson	NB
WA-8-24	.5000	1.1250	1.5000	.9030	.2550	1.0000	.1690	1.326	SR8	WA 8-24
WA-10-24	.6250	1.1250	1.6250	.8410	.2760	1.1250	.1930	1.488	SR10	WA 10-24
WA-12-24	.7500	1.5000	1.7500	1.1580	.3220	1.2500	.2210	2.100	SR12	WA 12-24
WA-16-24	1.0000	1.7500	2.1250	1.2800	.3590	1.5000	.2812	2.776	SR16	WA 16-24
WA-20-24	1.2500	2.1250	2.5000	1.5370	.4375	1.8750	.3430	4.060	SR20	WA 20-24
WA-24-24	1.5000	2.5000	3.0000	1.7980	.5580	2.2500	.3430	5.840	SR24	WA 24-24
WA-32-24	2.0000	3.2500	3.7500	2.3220	.8000	2.7500	.4062	9.500	SR32	WA 32-24

NOTE:

- 1.) Precision shaft support rails are made of extruded machined aluminum.
- 2.) Precision shaft support rails are available with or without pre-drilled mounting holes.
- 3.) For rails with pre-drilled mounting holes - add suffix "PD" .
- 4.) All rail lengths are 24".
- 5.) Some non-critical dimensions may vary between manufacturers.

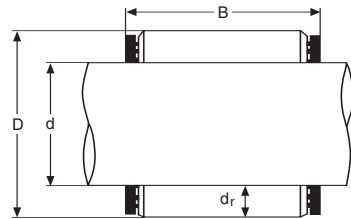


JOURNAL ROLLER ASSEMBLIES - INCH DIMENSIONS

Consolidated No.	Dimensions (Inch)					Approx. Wgt. (lbs.)	Interchange		
	d Shaft Dia.	D Outside Dia.	B Oper. Space	dr Roller Dia.	BAL		BERLISS HYATT RBC	ROLLWAY	
92120	.5000	.8125	1.2500	.1562	.080	-	92120	-	
93020	.3750	.7500	1.2500	.1875	.070	-	93020	060220	
93024	.3750	.7500	1.5000	.1875	.100	-	93024	-	
93028	.3750	.7500	1.7500	.1875	.110	-	93028	-	
93032	.3750	.7500	2.0000	.1875	.130	-	93032	-	
93112	.5000	.8750	.7500	.1875	.070	080312	93112	080212	
93116	.5000	.8750	1.0000	.1875	.090	080316	93116	080216	
93118	.5000	.8750	1.1250	.1875	.100	080318	93118	080218	
93120	.5000	.8750	1.2500	.1875	.110	080320	93120	080220	
93122	.5000	.8750	1.3750	.1875	.130	080322	93122	080222	
93124	.5000	.8750	1.5000	.1875	.140	080324	93124	080224	
93126	.5000	.8750	1.6250	.1875	.150	080326	93126	080226	
93128	.5000	.8750	1.7500	.1875	.160	080328	93128	080228	
93132	.5000	.8750	2.0000	.1875	.180	080332	93132	080232	
93212	.6250	1.0000	.7500	.1875	.080	100312	93212	100212	
93216	.6250	1.0000	1.0000	.1875	.110	100316	93216	100216	
93218	.6250	1.0000	1.1250	.1875	.120	100318	93218	100218	
93220	.6250	1.0000	1.2500	.1875	.130	100320	93220	100220	
93222	.6250	1.0000	1.3750	.1875	.150	100322	93222	100222	
93224	.6250	1.0000	1.5000	.1875	.170	100324	93224	100224	
93226	.6250	1.0000	1.6250	.1875	.190	100326	93226	100226	
93228	.6250	1.0000	1.7500	.1875	.200	100328	93228	100228	
93232	.6250	1.0000	2.0000	.1875	.230	100332	93232	100232	
93236	.6250	1.0000	2.2500	.1875	.260	100336	93236	-	
93240	.6250	1.0000	2.5000	.1875	.300	100340	93240	-	
93312	.7500	1.1250	.7500	.1875	.090	120312	93312	120212	
93316	.7500	1.1250	1.0000	.1875	.120	120316	93316	120216	
93318	.7500	1.1250	1.1250	.1875	.130	120318	93318	120218	
93320	.7500	1.1250	1.2500	.1875	.140	120320	93320	120220	
93322	.7500	1.1250	1.3750	.1875	.160	120322	93322	120222	
93324	.7500	1.1250	1.5000	.1875	.190	120324	93324	120224	
93326	.7500	1.1250	1.6250	.1875	.200	120326	93326	120226	
93328	.7500	1.1250	1.7500	.1875	.220	120328	93328	120228	
93332	.7500	1.1250	2.0000	.1875	.250	120332	93332	120232	
93336	.7500	1.1250	2.2500	.1875	.280	120336	93336	-	
93340	.7500	1.1250	2.5000	.1875	.320	120340	93340	-	
93344	.7500	1.1250	2.7500	.1875	.340	120344	93344	-	
93348	.7500	1.1250	3.0000	.1875	.400	120348	93348	-	
93412	.8750	1.2500	.7500	.1875	.100	140312	93412	140212	
93416	.8750	1.2500	1.0000	.1875	.130	140316	93416	140216	
93418	.8750	1.2500	1.1250	.1875	.150	140318	93418	140218	
93420	.8750	1.2500	1.2500	.1875	.160	140320	93420	140220	
93422	.8750	1.2500	1.3750	.1875	.180	140322	93422	140222	
93424	.8750	1.2500	1.5000	.1875	.200	140324	93424	140224	
93426	.8750	1.2500	1.6250	.1875	.220	140326	93426	140226	
93428	.8750	1.2500	1.7500	.1875	.240	140328	93428	140228	
93432	.8750	1.2500	2.0000	.1875	.280	140332	93432	140232	
93436	.8750	1.2500	2.2500	.1875	.310	140336	93436	140236	
93440	.8750	1.2500	2.5000	.1875	.350	140340	93440	-	
93444	.8750	1.2500	2.7500	.1875	.390	140344	93444	-	
93448	.8750	1.2500	3.0000	.1875	.440	140348	93448	-	

NOTE:

- 1.) The above have hardened and ground solid steel trunnioned end rollers.
- 2.) Solid races for this series are available on a special order basis.

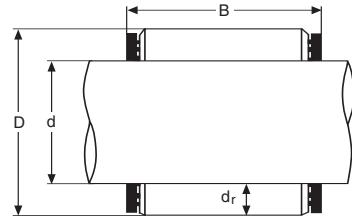


JOURNAL ROLLER ASSEMBLIES - INCH DIMENSIONS (cont'd)

Consolidated No.	Dimensions (Inch)				Approx. Wgt. (lbs.)	Interchange		
	d Shaft Dia.	D Outside Dia.	B Oper. Space	dr Roller Dia.		BAL	BERLISS HYATT RBC	ROLLWAY
93512	1.0000	1.3750	.7500	.1875	.150	160312	93512	-
93516	1.0000	1.3750	1.0000	.1875	.190	160316	93516	-
93518	1.0000	1.3750	1.1250	.1875	.220	160318	93518	-
93520	1.0000	1.3750	1.2500	.1875	.250	160320	93520	-
93522	1.0000	1.3750	1.3750	.1875	.280	160322	93522	-
93524	1.0000	1.3750	1.5000	.1875	.300	160324	93524	-
93526	1.0000	1.3750	1.6250	.1875	.320	160326	93526	-
93528	1.0000	1.3750	1.7500	.1875	.350	160328	93528	-
93532	1.0000	1.3750	2.0000	.1875	.400	160332	93532	-
93536	1.0000	1.3750	2.2500	.1875	.480	160336	93536	-
93540	1.0000	1.3750	2.5000	.1875	.540	160340	93540	-
93544	1.0000	1.3750	2.7500	.1875	.580	160344	93544	-
93548	1.0000	1.3750	3.0000	.1875	.620	160348	93548	-
93612	1.1250	1.5000	.7500	.1875	.350	180312	93612	-
93616	1.1250	1.5000	1.0000	.1875	.380	180316	93616	-
93618	1.1250	1.5000	1.1250	.1875	.400	180318	93618	-
93620	1.1250	1.5000	1.2500	.1875	.420	180320	93620	-
93622	1.1250	1.5000	1.3750	.1875	.440	180322	93622	-
93624	1.1250	1.5000	1.5000	.1875	.460	180324	93624	-
93626	1.1250	1.5000	1.6250	.1875	.480	180326	93626	-
93628	1.1250	1.5000	1.7500	.1875	.500	180328	93628	-
93632	1.1250	1.5000	2.0000	.1875	.540	180332	93632	-
93636	1.1250	1.5000	2.2500	.1875	.620	180336	93636	-
93640	1.1250	1.5000	2.5000	.1875	.680	180340	93640	-
93644	1.1250	1.5000	2.7500	.1875	.740	180344	93644	-
93648	1.1250	1.5000	3.0000	.1875	.800	180348	93648	-
94112	.5000	1.0000	.7500	.2500	.100	080412	94112	080412
94116	.5000	1.0000	1.0000	.2500	.130	080416	94116	080416
94118	.5000	1.0000	1.1250	.2500	.150	080418	94118	080418
94120	.5000	1.0000	1.2500	.2500	.160	080420	94120	080420
94122	.5000	1.0000	1.3750	.2500	.180	080422	94122	080422
94124	.5000	1.0000	1.5000	.2500	.190	080424	94124	080424
94126	.5000	1.0000	1.6250	.2500	.210	080426	94126	080426
94128	.5000	1.0000	1.7500	.2500	.230	080428	94128	080428
94130	.5000	1.0000	1.8750	.2500	.250	080430	94130	080430
94132	.5000	1.0000	2.0000	.2500	.270	080432	94132	080432
94136	.5000	1.0000	2.2500	.2500	.310	080436	94136	-
94140	.5000	1.0000	2.5000	.2500	.350	080440	94140	-
94212	.6250	1.1250	.7500	.2500	.100	100412	94212	100412
94216	.6250	1.1250	1.0000	.2500	.140	100416	94216	100416
94218	.6250	1.1250	1.1250	.2500	.160	100418	94218	100418
94220	.6250	1.1250	1.2500	.2500	.170	100420	94220	100420
94222	.6250	1.1250	1.3750	.2500	.190	100422	94222	100422
94224	.6250	1.1250	1.5000	.2500	.210	100424	94224	100424
94226	.6250	1.1250	1.6250	.2500	.230	100426	94226	100426
94228	.6250	1.1250	1.7500	.2500	.240	100428	94228	100428
94230	.6250	1.1250	1.8750	.2500	.260	100430	94230	100430
94232	.6250	1.1250	2.0000	.2500	.280	100432	94232	100432
94236	.6250	1.1250	2.2500	.2500	.320	100436	94236	-
94240	.6250	1.1250	2.5000	.2500	.360	100440	94240	-

NOTE:

- 1.) The above have hardened and ground solid steel trunnion end rollers.
- 2.) Solid races for this series are available on a special order basis.

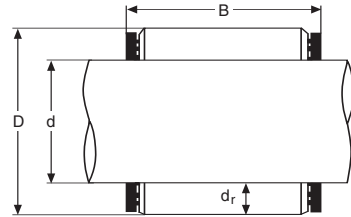


JOURNAL ROLLER ASSEMBLIES - INCH DIMENSIONS (cont'd)

Consolidated No.	Dimensions (Inch)				Approx. Wgt. (lbs.)	Interchange		
	d Shaft Dia.	D Outside Dia.	B Oper. Space	dr Roller Dia.		BAL	BERLISS HYATT RBC	ROLLWAY
94312	.7500	1.2500	.7500	.2500	.160	120412	94312	120412
94316	.7500	1.2500	1.0000	.2500	.180	120416	94316	120416
94318	.7500	1.2500	1.1250	.2500	.210	120418	94318	120418
94320	.7500	1.2500	1.2500	.2500	.230	120420	94320	120420
94322	.7500	1.2500	1.3750	.2500	.250	120422	94322	120422
94324	.7500	1.2500	1.5000	.2500	.270	120424	94324	120424
94326	.7500	1.2500	1.6250	.2500	.290	120426	94326	120426
94328	.7500	1.2500	1.7500	.2500	.310	120428	94328	120428
94330	.7500	1.2500	1.8750	.2500	.330	120430	94330	120430
94332	.7500	1.2500	2.0000	.2500	.400	120432	94332	120432
94336	.7500	1.2500	2.2500	.2500	.430	120436	94336	120436
94338	.7500	1.2500	2.3750	.2500	.450	120438	-	-
94340	.7500	1.2500	2.5000	.2500	.490	120440	94340	120440
94412	.8750	1.3750	.7500	.2500	.140	140412	94412	140412
94416	.8750	1.3750	1.0000	.2500	.180	140416	94416	140416
94418	.8750	1.3750	1.1250	.2500	.200	140418	94418	140418
94420	.8750	1.3750	1.2500	.2500	.220	140420	94420	140420
94422	.8750	1.3750	1.3750	.2500	.240	140422	94422	140422
94424	.8750	1.3750	1.5000	.2500	.260	140424	94424	140424
94428	.8750	1.3750	1.7500	.2500	.310	140428	94428	140428
94430	.8750	1.3750	1.8750	.2500	.330	140430	94430	140430
94432	.8750	1.3750	2.0000	.2500	.350	140432	94432	140432
94436	.8750	1.3750	2.2500	.2500	.410	140436	94436	140436
94440	.8750	1.3750	2.5000	.2500	.450	140440	94440	140440
94444	.8750	1.3750	2.7500	.2500	.490	140444	94444	-
94448	.8750	1.3750	3.0000	.2500	.550	140448	94448	-
94512	1.0000	1.5000	.7500	.2500	.170	160412	94512	160412
94516	1.0000	1.5000	1.0000	.2500	.210	160416	94516	160416
94518	1.0000	1.5000	1.1250	.2500	.240	160418	94518	160418
94520	1.0000	1.5000	1.2500	.2500	.270	160420	94520	160420
94522	1.0000	1.5000	1.3750	.2500	.300	160422	94522	160422
94524	1.0000	1.5000	1.5000	.2500	.320	160424	94524	160424
94526	1.0000	1.5000	1.6250	.2500	.340	160426	94526	160426
94528	1.0000	1.5000	1.7500	.2500	.370	160428	94528	160428
94530	1.0000	1.5000	1.8750	.2500	.400	160430	94530	160430
94532	1.0000	1.5000	2.0000	.2500	.430	160432	94532	160432
94536	1.0000	1.5000	2.2500	.2500	.510	160436	94536	160436
94540	1.0000	1.5000	2.5000	.2500	.570	160440	94540	160440
94544	1.0000	1.5000	2.7500	.2500	.610	160444	94544	-
94548	1.0000	1.5000	3.0000	.2500	.650	160448	94548	-
94612	1.1250	1.6250	.7500	.2500	.300	180412	94612	-
94616	1.1250	1.6250	1.0000	.2500	.330	180416	94616	180416
94618	1.1250	1.6250	1.1250	.2500	.350	180418	94618	-
94620	1.1250	1.6250	1.2500	.2500	.370	180420	94620	180420
94622	1.1250	1.6250	1.3750	.2500	.400	180422	94622	-
94624	1.1250	1.6250	1.5000	.2500	.420	180424	94624	180424
94626	1.1250	1.6250	1.6250	.2500	.440	180426	94626	-
94628	1.1250	1.6250	1.7500	.2500	.460	180428	94628	180428
94630	1.1250	1.6250	1.8750	.2500	.500	180430	94630	-

NOTE:

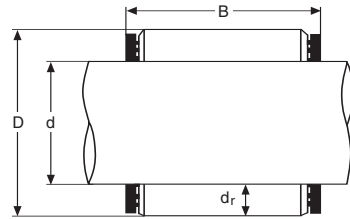
- 1.) The above have hardened and ground solid steel trunnion end rollers.
- 2.) Solid races for this series are available on a special order basis.



JOURNAL ROLLER ASSEMBLIES - INCH DIMENSIONS (cont'd)

Consolidated No.	Dimensions (Inch)					Approx. Wgt. (lbs.)	Interchange		
	d Shaft Dia.	D Outside Dia.	B Oper. Space	dr Roller Dia.	BAL		BERLISS HYATT RBC	ROLLWAY	
94632	1.1250	1.6250	2.0000	.2500	.520	180432	94632	180432	
94636	1.1250	1.6250	2.2500	.2500	.600	180436	94636	180436	
94640	1.1250	1.6250	2.5000	.2500	.660	180440	94640	180440	
94644	1.1250	1.6250	2.7500	.2500	.700	180444	94644	180444	
94648	1.1250	1.6250	3.0000	.2500	.750	180448	94648	180448	
94712	1.2500	1.7500	.7500	.2500	.270	200412	-	-	
94716	1.2500	1.7500	1.0000	.2500	.290	200416	94716	-	
94720	1.2500	1.7500	1.2500	.2500	.300	200420	94720	200420	
94724	1.2500	1.7500	1.5000	.2500	.350	200424	94724	-	
94726	1.2500	1.7500	1.6250	.2500	.390	200426	94726	200426	
94728	1.2500	1.7500	1.7500	.2500	.480	200428	94728	-	
94732	1.2500	1.7500	2.0000	.2500	.570	200432	94732	200432	
94736	1.2500	1.7500	2.2500	.2500	.700	200436	94736	-	
94740	1.2500	1.7500	2.5000	.2500	.800	200440	94740	-	
94744	1.2500	1.7500	2.7500	.2500	.950	200444	94744	-	
94748	1.2500	1.7500	3.0000	.2500	1.030	200448	94748	200448	
94764	1.2500	1.7500	4.0000	.2500	1.150	200464	94764	-	
95312	.7500	1.3750	.7500	.3125	.180	120512	95312	-	
95316	.7500	1.3750	1.0000	.3125	.190	120516	95316	120516	
95320	.7500	1.3750	1.2500	.3125	.260	120520	95320	120520	
95324	.7500	1.3750	1.5000	.3125	.300	120524	95324	120524	
95328	.7500	1.3750	1.7500	.3125	.370	120528	95328	120528	
95332	.7500	1.3750	2.0000	.3125	.450	120532	95332	120532	
95336	.7500	1.3750	2.2500	.3125	.500	120536	95336	120536	
95340	.7500	1.3750	2.5000	.3125	.550	120540	95340	120540	
95344	.7500	1.3750	2.7500	.3125	.610	120544	95344	-	
95348	.7500	1.3750	3.0000	.3125	.660	120548	95348	-	
95412	.8750	1.5000	.7500	.3125	.200	140512	95412	-	
95416	.8750	1.5000	1.0000	.3125	.240	140516	95416	140516	
95420	.8750	1.5000	1.2500	.3125	.260	140520	95420	140520	
95424	.8750	1.5000	1.5000	.3125	.320	140524	95424	140524	
95428	.8750	1.5000	1.7500	.3125	.350	140528	95428	140528	
95432	.8750	1.5000	2.0000	.3125	.450	140532	95432	140532	
95436	.8750	1.5000	2.2500	.3125	.490	140536	95436	140536	
95440	.8750	1.5000	2.5000	.3125	.530	140540	95440	140540	
95444	.8750	1.5000	2.7500	.3125	.590	140544	95444	-	
95448	.8750	1.5000	3.0000	.3125	.650	140548	95448	-	
95512	1.0000	1.6250	.7500	.3125	.300	160512	95512	-	
95516	1.0000	1.6250	1.0000	.3125	.340	160516	95516	160516	
95520	1.0000	1.6250	1.2500	.3125	.360	160520	95520	160520	
95524	1.0000	1.6250	1.5000	.3125	.420	160524	95524	160524	
95528	1.0000	1.6250	1.7500	.3125	.450	160528	95528	160528	
95532	1.0000	1.6250	2.0000	.3125	.510	160532	95532	160532	
95536	1.0000	1.6250	2.2500	.3125	.550	160536	95536	160536	
95540	1.0000	1.6250	2.5000	.3125	.590	160540	95540	160540	
95544	1.0000	1.6250	2.7500	.3125	.650	160544	95544	160544	
95548	1.0000	1.6250	3.0000	.3125	.710	160548	95548	160548	
95556	1.0000	1.6250	3.5000	.3125	.750	160556	95556	-	
95564	1.0000	1.6250	4.0000	.3125	.800	160564	95564	-	
95616	1.1250	1.7500	1.0000	.3125	.240	180516	95616	-	
95624	1.1250	1.7500	1.5000	.3125	.380	180524	95624	-	
95632	1.1250	1.7500	2.0000	.3125	.590	180532	95632	180532	
95636	1.1250	1.7500	2.2500	.3125	.670	180536	95636	180536	
95640	1.1250	1.7500	2.5000	.3125	.750	180540	95640	180540	
95648	1.1250	1.7500	3.0000	.3125	.880	180548	95648	-	

NOTE:
 1.) The above have hardened and ground solid steel trunnioned end rollers.
 2.) Solid races for this series are available on a special order basis.

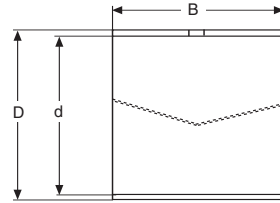


JOURNAL ROLLER ASSEMBLIES - INCH DIMENSIONS (cont'd)

Consolidated No.	Dimensions (Inch)				Approx. Wgt. (lbs.)	Interchange		
	d Shaft Dia.	D Outside Dia.	B Oper. Space	dr Roller Dia.		BAL	BERLISS HYATT RBC	ROLLWAY
95712	1.2500	1.8750	.7500	.3125	.290	200512	95712	-
95716	1.2500	1.8750	1.0000	.3125	.310	200516	95716	200516
95720	1.2500	1.8750	1.2500	.3125	.380	200520	95720	200520
95724	1.2500	1.8750	1.5000	.3125	.460	200524	95724	200524
95728	1.2500	1.8750	1.7500	.3125	.530	200528	95728	200528
95732	1.2500	1.8750	2.0000	.3125	.600	200532	95732	200532
95736	1.2500	1.8750	2.2500	.3125	.750	200536	95736	200536
95740	1.2500	1.8750	2.5000	.3125	.930	200540	95740	200540
95744	1.2500	1.8750	2.7500	.3125	1.130	200544	95744	200544
95748	1.2500	1.8750	3.0000	.3125	1.210	200548	95748	200548
95756	1.2500	1.8750	3.5000	.3125	1.370	200556	95756	200556
95764	1.2500	1.8750	4.0000	.3125	1.780	200564	95764	200564
95824	1.3750	2.0000	1.5000	.3125	.410	220524	95824	-
95832	1.3750	2.0000	2.0000	.3125	.570	220532	95832	-
95840	1.3750	2.0000	2.5000	.3125	.690	220540	95840	220540
95848	1.3750	2.0000	3.0000	.3125	.850	220548	95848	-
95912	1.5000	2.1250	.7500	.3125	.500	240512	95912	-
95920	1.5000	2.1250	1.2500	.3125	.550	240520	95920	-
95924	1.5000	2.1250	1.5000	.3125	.610	240524	95924	-
95928	1.5000	2.1250	1.7500	.3125	.690	240528	95928	-
95932	1.5000	2.1250	2.0000	.3125	.760	240532	95932	-
95936	1.5000	2.1250	2.2500	.3125	.890	240536	95936	-
95940	1.5000	2.1250	2.5000	.3125	.980	240540	95940	-
95944	1.5000	2.1250	2.7500	.3125	1.200	240544	95944	-
95948	1.5000	2.1250	3.0000	.3125	1.350	240548	95948	-
95956	1.5000	2.1250	3.5000	.3125	1.500	240556	95956	-
95964	1.5000	2.1250	4.0000	.3125	1.800	240564	95964	-
96516	1.0000	1.7500	1.0000	.3750	.320	160616	96516	160616
96524	1.0000	1.7500	1.5000	.3750	.460	160624	96524	160624
96532	1.0000	1.7500	2.0000	.3750	.590	160632	96532	160632
96536	1.0000	1.7500	2.2500	.3750	.660	160636	96536	-
96540	1.0000	1.7500	2.5000	.3750	.780	160640	96540	160640
96548	1.0000	1.7500	3.0000	.3750	.910	160648	96548	160648
96564	1.0000	1.7500	4.0000	.3750	1.500	160664	96564	160664
96716	1.2500	2.0000	1.0000	.3750	.410	200616	96716	200616
96720	1.2500	2.0000	1.2500	.3750	.620	200620	96720	200620
96724	1.2500	2.0000	1.5000	.3750	.810	200624	96724	200624
96728	1.2500	2.0000	1.7500	.3750	.950	200628	96728	200628
96732	1.2500	2.0000	2.0000	.3750	1.220	200632	96732	200632
96740	1.2500	2.0000	2.5000	.3750	1.620	200640	96740	200640
96748	1.2500	2.0000	3.0000	.3750	2.030	200648	96748	200648
96764	1.2500	2.0000	4.0000	.3750	2.500	200664	96764	200664
96780	1.2500	2.0000	5.0000	.3750	3.100	200680	96780	-
97724	1.2500	2.1250	1.5000	.4375	.630	200724	97724	-
97732	1.2500	2.1250	2.0000	.4375	.820	200732	97732	-
97740	1.2500	2.1250	2.5000	.4375	1.070	200740	97740	-
97748	1.2500	2.1250	3.0000	.4375	1.220	200748	97748	200748
98724	1.2500	2.2500	1.5000	.5000	.750	200824	98724	200824
98732	1.2500	2.2500	2.0000	.5000	1.000	200832	98732	200832
98740	1.2500	2.2500	2.5000	.5000	1.250	200840	98740	200840
98748	1.2500	2.2500	3.0000	.5000	1.470	200848	98748	200848
98824	1.3750	2.3750	1.5000	.5000	.800	220824	98824	220824
98832	1.3750	2.3750	2.0000	.5000	1.070	220832	98832	220832
98840	1.3750	2.3750	2.5000	.5000	1.350	220840	98840	220840
98848	1.3750	2.3750	3.0000	.5000	1.610	220848	98848	220848

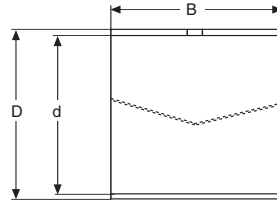
NOTE:

- 1.) The above have hardened and ground solid steel trunnion end rollers.
- 2.) Solid races for this series are available on a special order basis.



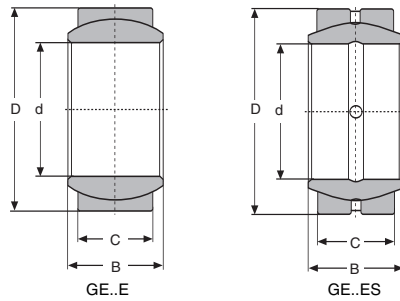
JOURNAL ROLLER BEARING OUTER RACES - INCH DIMENSIONS

Consolidated No.	Appropriate Assembly	Interchange	Consolidated No.	
			d	D B
		BERLISS	HYATT	
$1\frac{3}{16} \times 1\frac{15}{16} \times 1\frac{1}{4}$	92120	-	-	-
$\frac{3}{4} \times 1\frac{13}{16} \times 1\frac{1}{4}$	93020	-	4849	-
$\frac{3}{4} \times 1\frac{13}{16} \times 1\frac{1}{2}$	93024	-	5524	-
$\frac{3}{4} \times 1\frac{13}{16} \times 1\frac{3}{4}$	93028	-	-	-
$\frac{3}{4} \times 1\frac{13}{16} \times 2$	93032	-	5954	-
$\frac{7}{8} \times 1\frac{15}{16} \times \frac{3}{4}$	93112	-	5913	-
$\frac{7}{8} \times 1\frac{15}{16} \times 1$	93116	-	5193	-
$\frac{7}{8} \times 1\frac{15}{16} \times 1\frac{1}{4}$	93120	-	5080	4690
$\frac{7}{8} \times 1\frac{15}{16} \times 1\frac{1}{2}$	93124	-	4419	4889
$\frac{7}{8} \times 1\frac{15}{16} \times 1\frac{3}{4}$	93128	-	4646	4888
$\frac{7}{8} \times 1\frac{15}{16} \times 2$	93132	-	5177	-
$1 \times 1\frac{1}{16} \times \frac{3}{4}$	93212	94112	4687	4687
$1 \times 1\frac{1}{16} \times 1$	93216	94116	4100	4887
$1 \times 1\frac{1}{16} \times 1\frac{1}{4}$	93220	94120	4851	4851
$1 \times 1\frac{1}{16} \times 1\frac{1}{2}$	93224	94124	4120	4814
$1 \times 1\frac{1}{16} \times 1\frac{3}{4}$	93228	94128	4802	4890
$1 \times 1\frac{1}{16} \times 2$	93232	94132	4136	4891
$1 \times 1\frac{1}{16} \times 2\frac{1}{4}$	93236	94136	-	-
$1 \times 1\frac{1}{16} \times 2\frac{1}{2}$	93240	94140	5084	-
$1\frac{1}{8} \times 1\frac{3}{16} \times \frac{3}{4}$	93312	94212	4892	4892
$1\frac{1}{8} \times 1\frac{3}{16} \times 1$	93316	94216	4101	4375A
$1\frac{1}{8} \times 1\frac{3}{16} \times 1\frac{1}{4}$	93320	94220	4820	4820
$1\frac{1}{8} \times 1\frac{3}{16} \times 1\frac{1}{2}$	93324	94224	4121	4121
$1\frac{1}{8} \times 1\frac{3}{16} \times 1\frac{3}{4}$	93328	94228	4648	4828
$1\frac{1}{8} \times 1\frac{3}{16} \times 2$	93332	94232	4137	4815
$1\frac{1}{8} \times 1\frac{3}{16} \times 2\frac{1}{4}$	93336	94236	5988	-
$1\frac{1}{8} \times 1\frac{3}{16} \times 2\frac{1}{2}$	93340	94240	4168	-
$1\frac{1}{8} \times 1\frac{3}{16} \times 3$	93348	-	5951	-
$1\frac{1}{4} \times 1\frac{5}{16} \times \frac{3}{4}$	93412	94312	-	-
$1\frac{1}{4} \times 1\frac{5}{16} \times 1$	93416	94316	5007	-
$1\frac{1}{4} \times 1\frac{5}{16} \times 1\frac{1}{4}$	93420	94320	4683	-
$1\frac{1}{4} \times 1\frac{5}{16} \times 1\frac{1}{2}$	93424	94324	5014	4822
$1\frac{1}{4} \times 1\frac{5}{16} \times 1\frac{3}{4}$	93428	94328	4835	4835
$1\frac{1}{4} \times 1\frac{5}{16} \times 2$	93432	94332	4422	4834
$1\frac{1}{4} \times 1\frac{5}{16} \times 2\frac{1}{4}$	93436	94336	5997	-
$1\frac{1}{4} \times 1\frac{5}{16} \times 2\frac{1}{2}$	93440	94340	4649	4898
$1\frac{1}{4} \times 1\frac{5}{16} \times 2\frac{3}{4}$	93444	-	5994	-
$1\frac{1}{4} \times 1\frac{5}{16} \times 3$	93448	-	5965	-
$1\frac{3}{8} \times 1\frac{7}{16} \times \frac{3}{4}$	-	94412	5916	-
$1\frac{3}{8} \times 1\frac{7}{16} \times 1$	93516	94416	4102	4896
$1\frac{3}{8} \times 1\frac{7}{16} \times 1\frac{1}{4}$	93520	94420	95320	5057
$1\frac{3}{8} \times 1\frac{7}{16} \times 1\frac{1}{2}$	93524	94424	95324	4122
$1\frac{3}{8} \times 1\frac{7}{16} \times 1\frac{3}{4}$	93528	94428	95328	4527
$1\frac{3}{8} \times 1\frac{7}{16} \times 2$	93532	94432	95332	4138
$1\frac{3}{8} \times 1\frac{7}{16} \times 2\frac{1}{4}$	93536	94436	95336	5097
$1\frac{3}{8} \times 1\frac{7}{16} \times 2\frac{1}{2}$	93540	94440	95340	4169
$1\frac{3}{8} \times 1\frac{7}{16} \times 2\frac{3}{4}$	93544	94444	95344	5949
$1\frac{3}{8} \times 1\frac{7}{16} \times 3$	93548	94448	95348	5147
$1\frac{1}{2} \times 1\frac{9}{16} \times \frac{3}{4}$	93612	-	5917	-
$1\frac{1}{2} \times 1\frac{9}{16} \times 1$	93616	94516	95416	4103
$1\frac{1}{2} \times 1\frac{9}{16} \times 1\frac{1}{4}$	93620	94520	95420	4234
$1\frac{1}{2} \times 1\frac{9}{16} \times 1\frac{1}{2}$	93624	94524	95424	4123
$1\frac{1}{2} \times 1\frac{9}{16} \times 1\frac{3}{4}$	93628	94528	95428	5526
$1\frac{1}{2} \times 1\frac{9}{16} \times 2$	93632	94532	95432	4139
$1\frac{1}{2} \times 1\frac{9}{16} \times 2\frac{1}{4}$	93636	94536	95436	5082
$1\frac{1}{2} \times 1\frac{9}{16} \times 2\frac{1}{2}$	93640	94540	95440	4170
$1\frac{1}{2} \times 1\frac{9}{16} \times 2\frac{3}{4}$	93644	-	-	5522
$1\frac{1}{2} \times 1\frac{9}{16} \times 3$	93648	-	-	4171



JOURNAL ROLLER BEARING OUTER RACES - INCH DIMENSIONS (cont'd)

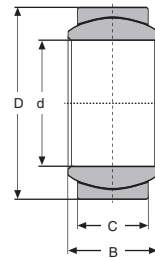
Consolidated No.	Appropriate Assembly	Interchange	
		BERLISS	HYATT
d D B			
1 5/8 x 1 3/4 x 3/4	-	95512	-
1 5/8 x 1 3/4 x 1	-	94616 95516	4641 4641
1 5/8 x 1 3/4 x 1 1/4	-	94620 -	5560 4699
1 5/8 x 1 3/4 x 1 1/2	-	94624 95524	5945 -
1 5/8 x 1 3/4 x 1 3/4	-	94628 95528	4548 4548
1 5/8 x 1 3/4 x 2	-	94632 95532	4838 4838
1 5/8 x 1 3/4 x 2 1/4	-	94636 95536	- -
1 5/8 x 1 3/4 x 2 1/2	-	- 95540	4839 4839
1 5/8 x 1 3/4 x 3	-	94648 95548	4841 4643
1 3/4 x 1 7/8 x 1	94716	95616 96516	- -
1 3/4 x 1 7/8 x 1 1/4	94720	95620 96520	- -
1 3/4 x 1 7/8 x 1 1/2	94724	95624 96524	- -
1 3/4 x 1 7/8 x 2	94732	95632 96532	4549 4549
1 3/4 x 1 7/8 x 2 1/4	94736	95636 96536	- -
1 3/4 x 1 7/8 x 2 1/2	94740	95640 96540	5043 4895
1 3/4 x 1 7/8 x 3	94748	95648 96548	4886 4886
1 3/4 x 1 7/8 x 4	94764	- 96564	5535 -
1 7/8 x 2 x 1 1/2	95724	- -	4829 4829
1 7/8 x 2 x 2	95732	- -	4843 4843
1 7/8 x 2 x 2 1/2	95740	- -	4893 4893
1 7/8 x 2 x 3	95748	- -	4382 4837
1 7/8 x 2 x 3 1/2	95756	- -	5993 -
1 7/8 x 2 x 4	95764	- -	5534 -
2 x 2 1/8 x 1 1/2	95824	- -	- -
2 x 2 1/8 x 2	95832	- -	5925 -
2 x 2 1/8 x 2 1/2	95840	- -	- -
2 x 2 1/8 x 3	95848	- -	4832 -
2 x 2 3/16 x 2	96732	- -	4425 4425
2 x 2 3/16 x 2 1/2	96740	- -	4446 4446
2 x 2 3/16 x 3	96748	- -	4450 4450
2 x 2 3/16 x 4	96764	- -	- -
2 x 2 3/16 x 5	96780	- -	- -
2 1/8 x 2 1/4 x 1 1/4	95820	- -	4689 4689
2 1/8 x 2 1/4 x 1 1/2	95924	- -	5585 -
2 1/8 x 2 1/4 x 2	95932	- -	4387 4387
2 1/8 x 2 1/4 x 2 1/2	95940	- -	4395 4395
2 1/8 x 2 1/4 x 3	95948	- -	5990 -
2 1/8 x 2 1/4 x 3 1/2	95956	- -	4236 -
2 1/8 x 2 1/4 x 4	95964	- -	4238 -
2 1/8 x 2 5/16 x 1 1/2	-	97724	- -
2 1/8 x 2 5/16 x 2	-	97732	4427 4427
2 1/8 x 2 5/16 x 2 1/2	-	97740	4439 4439
2 1/8 x 2 5/16 x 3	-	97748	4460 4460
2 1/4 x 2 7/16 x 1 1/2	-	98724	4406 4406
2 1/4 x 2 7/16 x 2	-	98732	4431 4431
2 1/4 x 2 7/16 x 2 1/2	-	98740	4448 4448
2 1/4 x 2 7/16 x 3	-	98748	4452 4452
2 3/8 x 2 9/16 x 1 1/2	-	98824	4407 4407
2 3/8 x 2 9/16 x 2	-	98832	4432 4432
2 3/8 x 2 9/16 x 2 1/2	-	98840	4438 4438
2 3/8 x 2 9/16 x 3	-	98848	4454 4454



SPHERICAL PLAIN BEARINGS - STEEL ON STEEL - METRIC DIMENSIONS

Consolidated No.	Dimensions (Metric)				Angle of Tilt	Approx. Wgt. (lbs.)	Interchange			
	d	D	B	C			FAG	ELGES INA	RBC	SKF
GE-4 E	4	12	5	3	17°	.010	GE4E	-	-	GE 4 E
GE-5 E	5	14	6	4	13°	.010	GE5E	-	-	GE 5 E
GE-6 E	6	14	6	4	13°	.010	GE6E	GE 6 DO	-	GE 6 E
GE-8 E	8	16	8	5	15°	.020	GE8E	GE 8 DO	-	GE 8 E
GE-10 E	10	19	9	6	12°	.030	GE10E	GE 10 DO	-	GE 10 E
GE-12 E	12	22	10	7	11°	.040	GE12E	GE 12 DO	MB12	GE 12 E
GE-15 ES	15	26	12	9	10°	.080	GE15ES	GE 15 DO	MB15	GE 15 ES
GE-17 ES	17	30	14	10	11°	.110	GE17ES	GE 17 DO	MB17	GE 17 ES
GE-20 ES	20	35	16	12	9°	.140	GE20ES	GE 20 DO	MB20	GE 20 ES
GE-25 ES	25	42	20	16	8°	.260	GE25ES	GE 25 DO	MB25	GE 25 ES
GE-30 ES	30	47	22	18	7°	.350	GE30ES	GE 30 DO	MB30	GE 30 ES
GE-35 ES	35	55	25	20	7°	.510	GE35ES	GE 35 DO	MB35	GE 35 ES
GE-40 ES	40	62	28	22	7°	.710	GE40ES	GE 40 DO	MB40	GE 40 ES
GE-45 ES	45	68	32	25	8°	1.000	GE45ES	GE 45 DO	MB45	GE 45 ES
GE-50 ES	50	75	35	28	7°	1.250	GE50ES	GE 50 DO	MB50	GE 50 ES
GE-60 ES	60	90	44	36	7°	2.450	GE60ES	GE 60 DO	MB60	GE 60 ES
GE-70 ES	70	105	49	40	6°	3.400	GE70ES	GE 70 DO	MB70	GE 70 ES
GE-80 ES	80	120	55	45	6°	5.050	GE80ES	GE 80 DO	MB80	GE 80 ES
GE-90 ES	90	130	60	50	5°	6.050	GE90ES	GE 90 DO	MB90	GE 90 ES
GE-100 ES	100	150	70	55	7°	9.700	GE100ES	GE 100 DO	MB100	GE 100 ES
GE-110 ES	110	160	70	55	6°	10.500	GE110ES	GE 110 DO	MB110	GE 110 ES
GE-120 ES	120	180	85	70	6°	17.000	GE120ES	GE 120 DO	MB120	GE 120 ES
GE-140 ES	140	210	90	70	7°	24.500	GE140ES	GE 140 DO	MB140	GE 140 ES
GE-160 ES	160	230	105	80	8°	31.000	GE160ES	GE 160 DO	MB160-9L	GE 160 ES
GE-180 ES	180	260	105	80	7°	41.000	GE180ES	GE 180 DO	MB180-9L	GE 180 ES
GE-200 ES	200	290	130	100	7°	61.500	GE200ES	GE 200 DO	MB200-9L	GE 200 ES
GE-220 ES	220	320	135	100	8°	78.500	GE220ES	GE 220 DO	MB220-9L	GE 220 ES
GE-240 ES	240	340	140	100	8°	88.000	GE240ES	GE 240 DO	MB240-9L	GE 240 ES
GE-260 ES	260	370	150	110	7°	115.000	GE260ES	GE 260 DO	MB260-9L	GE 260 ES
GE-280 ES	280	400	155	120	6°	145.000	GE280ES	GE 280 DO	MB280-9L	GE 280 ES
GE-300 ES	300	430	165	120	7°	175.000	GE300ES	GE 300 DO	MB300-9L	GE 300 ES

NOTE:
 1.) GE..E series - split outer ring without lubrication holes.
 2.) GE..ES series - split outer ring with lubrication holes.



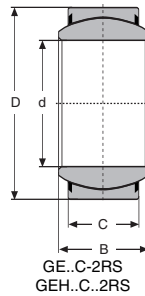
GE..C
GEH..C

SPHERICAL PLAIN BEARINGS - METRIC DIMENSIONS - HIGH CAPACITY

Consolidated No.	Dimensions (Metric)				Angle of Tilt	Approx. Wgt. (lbs.)	FAG	Interchange	
	d	D	B	C				ELGES INA	SKF
GE-4 C	4	12	5	3	17°	.010	GE4C	-	GE 4 C
GE-6 C	6	14	6	4	13°	.010	GE6C	GE 6 UK	GE 6 C
GEH-6 C	6	16	9	5	21°	.018	GEH6C	GE 6 FW	GEH 6 C
GE-8 C	8	16	8	5	15°	.020	GE8C	GE 8 UK	GE 8 C
GEH-8 C	8	19	11	6	21°	.031	GEH8C	GE 8 FW	GEH 8 C
GE-10 C	10	19	9	6	12°	.030	GE10C	GE 10 UK	GE 10 C
GEH-10 C	10	22	12	7	18°	.040	GEH10C	GE 10 FW	GEH 10 C
GE-12 C	12	22	10	7	11°	.040	GE12C	GE 12 UK	GE 12 C
GEH-12 C	12	26	15	9	18°	.070	GEH12C	GE 12 FW	GEH 12 C
GE-15 C	15	26	12	9	8°	.070	GE15C	GE 15 UK	GE 15 C
GEH-15 C	15	30	16	10	16°	.110	GEH15C	GE 15 FW	GEH 15 C
GE-17 C	17	30	14	10	10°	.110	GE17C	GE 17 UK	GE 17 C
GEH-17 C	17	35	20	12	19°	.200	GEH17C	GE 17 FW	GEH 17 C
GE-20 C	20	35	16	12	9°	.140	GE20C	GE 20 UK	GE 20 C
GEH-20 C	20	42	25	16	17°	.350	GEH20C	GE 20 FW	GEH 20 C
GE-25 C	25	42	20	16	7°	.260	GE25C	GE 25 UK	GE 25 C
GEH-25 C	25	47	28	18	17°	.440	GEH25C	GE 25 FW	GEH 25 C
GE-30 C	30	47	22	18	6°	.350	GE30C	GE 30 UK	GE 30 C

NOTE:

1.) Inner ring has hard chrome sliding surface. Outer ring sliding surface has PTFE-fabric coating. Other brands may have a liner of different material.



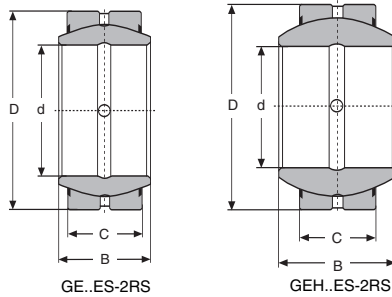
SPHERICAL PLAIN BEARINGS - METRIC DIMENSIONS - HIGH CAPACITY - TWO SEALS

Consolidated No.	Dimensions (Metric)				Approx. Wgt. (lbs.)	Interchange					
	d	D	B	C		Angle of Tilt	ELGES	FAG	INA	RBC	SKF
*GE-17 C-2RS	17	30	14	10	10°	.082	-	-	GE-17 UK-2RS	-	-
*GE-20 C-2RS	20	35	16	12	9°	.132	-	-	GE-20 UK-2RS	-	-
*GE-25 C-2RS	25	42	20	16	7°	.243	-	-	GE-25 UK-2RS	-	-
*GE-30 C-2RS	30	47	22	18	6°	.309	-	-	GE-30 UK-2RS	-	-
*GEH-30 C-2RS	30	55	32	20	17°	.617	-	-	GE-30 FW-2RS	-	-
*GE-35 C-2RS	35	55	25	20	7°	.510	GE 35 UK-2RS	GE-35 UK.2RS	GE-35 UK-2RS	MB35-FSS	GE 35 TE-2RS
GEH-35 C-2RS	35	62	35	22	16°	.860	GE 35 FW-2RS	-	GE 35 FW-2RS	-	-
*GE-40 C-2RS	40	62	28	22	7°	.710	GE 40 UK-2RS	GE-40 UK.2RS	GE-40 UK-2RS	MB40-FSS	GE 40 TE-2RS
GEH-40 C-2RS	40	68	40	25	17°	1.147	GE 40 FW-2RS	-	GE 40 FW-2RS	-	-
*GE-45 C-2RS	45	68	32	25	7°	1.000	GE 45 UK-2RS	GE-45 UK.2RS	GE-45 UK-2RS	MB45-FSS	GE 45 TE-2RS
GEH-45 C-2RS	45	75	43	28	15°	1.499	GE 45 FW-2RS	-	GE 45 FW-2RS	-	-
*GE-50 C-2RS	50	75	35	28	7°	1.250	GE 50 UK-2RS	GE-50 UK.2RS	GE-50 UK-2RS	MB50-FSS	GE 50 TE-2RS
GEH-50 C-2RS	50	90	56	36	17°	3.087	GE 50 FW-2RS	-	GE 50 FW-2RS	-	-
*GE-60 C-2RS	60	90	44	36	7°	2.450	GE 60 UK-2RS	GE-60 UK.2RS	GE-60 UK-2RS	MB60-FSS	GE 60 TE-2RS
GEH-60 C-2RS	60	105	63	40	17°	4.410	GE 60 FW-2RS	-	GE 60 FW-2RS	-	-
*GE-70 C-2RS	70	105	49	40	7°	3.400	GE 70 UK-2RS	GE-70 UK.2RS	GE-70 UK-2RS	MB70-FSS	GE 70 TE-2RS
GEH-70 C-2RS	70	120	70	45	16°	6.395	GE 70 FW-2RS	-	GE 70 FW-2RS	-	-
*GE-80 C-2RS	80	120	55	45	7°	5.050	GE 80 UK-2RS	GE-80 UK.2RS	GE-80 UK-2RS	MB80-FSS	GE 80 TE-2RS
GEH-80 C-2RS	80	130	75	50	14°	7.718	GE 80 FW-2RS	-	GE 80 FW-2RS	-	-
*GE-90 C-2RS	90	130	60	50	7°	6.050	GE 90 UK-2RS	GE-90 UK.2RS	GE-90 UK-2RS	MB90-FSS	GE 90 TE-2RS
GEH-90 C-2RS	90	150	85	55	15°	11.910	GE 90 FW-2RS	-	GE 90 FW-2RS	-	-
*GE-100 C-2RS	100	150	70	55	7°	9.700	GE 100 UK-2RS	GE-100 UK.2RS	GE-100 UK-2RS	MB100-FSS	GE 100 TA-2RS
GEH-100 C-2RS	100	160	85	55	14°	13.010	GE 100 FW-2RS	-	GE 100 FW-2RS	-	-
*GE-110 C-2RS	110	160	70	55	7°	10.500	GE 110 UK-2RS	GE-110 UK.2RS	GE-110 UK-2RS	MB110-FSS	GE 100 TA-2RS
GEH-110 C-2RS	110	180	100	70	12°	21.390	GE 110 FW-2RS	-	GE 110 FW-2RS	-	-
GE-120 C-2RS	120	180	85	70	7°	17.000	GE 120 UK-2RS	GE-120 UK.2RS	GE-120 UK-2RS	MB120-FSS	GE 120 TA-2RS
GEH-120 C-2RS	120	210	115	70	16°	33.080	GE 120 FW-2RS	-	GE 120 FW-2RS	-	-
*GE-140 C-2RS	140	210	90	70	7°	24.500	GE 140 UK-2RS	GE-140 UK.2RS	GE-140 UK-2RS	MB140-FSS	GE 140 TA-2RS
GEH-140 C-2RS	140	230	130	80	16°	40.790	GE 140 FW-2RS	-	GE 140 FW-2RS	-	-
*GE-160 C-2RS	160	230	105	80	7°	31.000	GE 160 UK-2RS	GE-160 UK.2RS	GE-160 UK-2RS	MB160-9LFSS	GE 160 TA-2RS
GEH-160 C-2RS	160	260	135	80	16°	55.130	GE 160 FW-2RS	-	GE 160 FW-2RS	-	-
*GE-180 C-2RS	180	260	105	80	7°	41.000	GE 180 UK-2RS	GE-180 UK.2RS	GE-180 UK-2RS	MB180-9LFSS	GE 180 TA-2RS
GEH-180-2RS	180	290	155	100	14°	78.280	GE 180 FW-2RS	-	GE 180 FW-2RS	-	-
*GE-200 C-2RS	200	290	130	100	7°	61.500	GE 200 UK-2RS	GE-200 UK.2RS	GE-200 UK-2RS	MB200-9LFSS	GE 200 TA-2RS
GEH-200 C-2RS	200	320	165	100	15°	99.230	GE 200 FW-2RS	-	GE 200 FW-2RS	-	-
*GE-220 C-2RS	220	320	135	100	7°	78.500	GE 220 UK-2RS	GE-220 UK.2RS	GE-220 UK-2RS	MB220-9LFSS	GE 220 TA-2RS
GEH-220 C-2RS	220	340	175	100	16°	112.460	GE 220 FW-2RS	-	GE 220 FW-2RS	-	-
*GE-240 C-2RS	240	340	140	100	7°	88.000	GE 240 UK-2RS	GE-240 UK.2RS	GE-240 UK-2RS	MB240-9LFSS	GE 240 TA-2RS
GEH-240 C-2RS	240	370	190	110	15°	141.120	GE 240 FW-2RS	-	GE 240 FW-2RS	-	-
*GE-260 C-2RS	260	370	150	110	7°	115.000	GE 260 UK-2RS	GE-260 UK.2RS	GE-260 UK-2RS	MB260-9LFSS	GE 260 TA-2RS
GEH-260 C-2RS	260	400	205	120	15°	178.610	GE 260 FW-2RS	-	GE 260 FW-2RS	-	-
*GE-280 C-2RS	280	400	155	120	7°	145.000	GE 280 UK-2RS	GE-280 UK.2RS	GE-280 UK-2RS	MB280-9LFSS	GE 280 TA-2RS
GEH-280 C-2RS	280	430	210	120	15°	207.270	GE 280 FW-2RS	-	GE 280 FW-2RS	-	-
*GE-300 C-2RS	300	430	165	120	7°	175.000	GE 300 UK-2RS	GE-300 UK.2RS	GE-300 UK-2RS	MB300-9LFSS	GE 300 TA-2RS

*Also available shielded - suffix CSZZ.

NOTE:

- 1.) GE..C-2RS - Split outer ring with seals.
- 2.) Inner ring has hard chrome sliding surface. Outer ring sliding surface has PTFE-fabric coating. Other brands may have a liner of different material.



SPHERICAL PLAIN BEARINGS - STEEL ON STEEL - METRIC DIMENSIONS - TWO SEALS

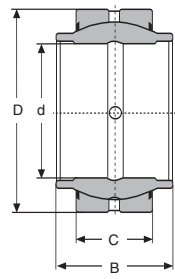
Consolidated No.	Dimensions (Metric)					Approx. Wgt. (lbs.)	Interchange			
	d	D	B	C	Angle of Tilt		FAG	ELGES INA	RBC	SKF
GE-15 ES-2RS	15	26	12	9	10°	.070	GE15ES.2RS	-	-	-
GE-17 ES-2RS	17	30	14	10	10°	.110	GE17ES.2RS	GE 17 DO-2RS	MB17-SS	-
GE-20 ES-2RS	20	35	16	12	9°	.150	GE20ES.2RS	GE 20 DO-2RS	MB17-SS	GE 20 ES-2RS
GE-25 ES-2RS	25	42	20	16	7°	.270	GE25ES.2RS	GE 25 DO-2RS	MB17-SS	GE 25 ES-2RS
GE-30 ES-2RS	30	47	22	18	6°	.360	GE30ES.2RS	GE 30 DO-2RS	MB17-SS	GE 30 ES-2RS
GE-35 ES-2RS	35	55	25	20	6°	.510	GE35ES.2RS	GE 35 DO-2RS	MB17-SS	GE 35 ES-2RS
GE-40 ES-2RS	40	62	28	22	7°	.710	GE40ES.2RS	GE 40 DO-2RS	MB17-SS	GE 40 ES-2RS
GE-45 ES-2RS	45	68	32	25	7°	1.020	GE45ES.2RS	GE 45 DO-2RS	MB17-SS	GE 45 ES-2RS
GE-50 ES-2RS	50	75	35	28	6°	1.240	GE50ES.2RS	GE 50 DO-2RS	MB17-SS	GE 50 ES-2RS
GE-60 ES-2RS	60	90	44	36	6°	2.430	GE60ES.2RS	GE 60 DO-2RS	MB17-SS	GE 60 ES-2RS
GE-70 ES-2RS	70	105	49	40	6°	3.420	GE70ES.2RS	GE 70 DO-2RS	MB17-SS	GE 70 ES-2RS
GE-80 ES-2RS	80	120	55	45	6°	5.070	GE80ES.2RS	GE 80 DO-2RS	MB17-SS	GE 80 ES-2RS
GE-90 ES-2RS	90	130	60	50	5°	6.070	GE90ES.2RS	GE 90 DO-2RS	MB17-SS	GE 90 ES-2RS
GE-100 ES-2RS	100	150	70	55	7°	9.700	GE100ES.2RS	GE 100 DO-2RS	MB17-SS	GE 100 ES-2RS
GE-110 ES-2RS	110	160	70	55	6°	10.590	GE110ES.2RS	GE 110 DO-2RS	MB17-SS	GE 110 ES-2RS
GE-120 ES-2RS	120	180	85	70	6°	18.190	GE120ES.2RS	GE 120 DO-2RS	MB17-SS	GE 120 ES-2RS
GE-140 ES-2RS	140	210	90	70	7°	24.250	GE140ES.2RS	GE 140 DO-2RS	MB17-SS	GE 140 ES-2RS
GE-160 ES-2RS	160	230	105	80	8°	29.770	GE160ES.2RS	GE 160 DO-2RS	MB17-SS	GE 160 ES-2RS
GE-180 ES-2RS	180	260	105	80	6°	40.700	GE180ES.2RS	GE 180 DO-2RS	MB17-SS	GE 180 ES-2RS
GE-200 ES-2RS	200	290	130	100	7°	61.730	GE200ES.2RS	GE 200 DO-2RS	MB17-SS	GE 200 ES-2RS
GE-220 ES-2RS	220	320	135	100	8°	78.270	GE220ES.2RS	GE 220 DO-2RS	MB17-SS	GE 220 ES-2RS
GE-240 ES-2RS	240	340	140	100	8°	88.190	GE240ES.2RS	GE 240 DO-2RS	MB17-SS	GE 240 ES-2RS
GE-260 ES-2RS	260	370	150	110	7°	110.230	GE260ES.2RS	GE 260 DO-2RS	MB17-SS	GE 260 ES-2RS
GE-280 ES-2RS	280	400	155	120	6°	141.100	GE280ES.2RS	GE 280 DO-2RS	MB17-SS	GE 280 ES-2RS
GE-300 ES-2RS	300	430	165	120	7°	165.350	GE300ES.2RS	GE 300 DO-2RS	MB17-SS	GE 300 ES-2RS

NOTE:
1.) GE..ES-2RS - Split outer ring with lubrication holes and seals.

SPHERICAL PLAIN BEARINGS - STEEL ON STEEL - METRIC DIMENSIONS - TWO SEALS

						FAG	ELGES	INA	SKF
GEH-15 ES-2RS	15	30	16	10	16°	.101	-	GE 15 FO-2RS	-
GEH-17 ES-2RS	17	30	14	10	19°	.110	-	GE 17 FO-2RS	-
GEH-20 ES-2RS	20	42	25	16	17°	.330	GE20FO.2RS	GE 20 FO-2RS	GEH-20 ES-2RS
GEH-25 ES-2RS	25	47	28	18	17°	.420	GE25FO.2RS	GE 25 FO-2RS	GEH-25 ES-2RS
GEH-30 ES-2RS	30	55	32	20	17°	.780	GE30FO.2RS	GE 30 FO-2RS	GEH-30 ES-2RS
GEH-35 ES-2RS	35	62	35	22	16°	1.040	GE35FO.2RS	GE 35 FO-2RS	GEH-35 ES-2RS
GEH-40 ES-2RS	40	68	40	25	17°	1.350	GE40FO.2RS	GE 40 FO-2RS	GEH-40 ES-2RS
GEH-45 ES-2RS	45	75	43	28	15°	1.770	GE45FO.2RS	GE 45 FO-2RS	GEH-45 ES-2RS
GEH-50 ES-2RS	50	90	56	36	17°	3.530	GE50FO.2RS	GE 50 FO-2RS	GEH-50 ES-2RS
GEH-60 ES-2RS	60	105	63	40	17°	5.300	GE60FO.2RS	GE 60 FO-2RS	GEH-60 ES-2RS
GEH-70 ES-2RS	70	120	70	45	16°	7.500	GE70FO.2RS	GE 70 FO-2RS	GEH-70 ES-2RS
GEH-80 ES-2RS	80	130	75	50	14°	9.040	GE80FO.2RS	GE 80 FO-2RS	GEH-80 ES-2RS
GEH-90 ES-2RS	90	150	85	55	15°	13.890	GE90FO.2RS	GE 90 FO-2RS	GEH-90 ES-2RS
GEH-100 ES-2RS	100	160	85	55	14°	15.000	GE100FO.2RS	GE 100 FO-2RS	GEH-100 ES-2RS
GEH-110 ES-2RS	110	180	100	70	12°	24.250	GE110FO.2RS	GE 110 FO-2RS	GEH-110 ES-2RS
GEH-120 ES-2RS	120	210	115	70	16°	33.289	-	GE 120 FO-2RS	-
GEH-140 ES-2RS	140	230	130	80	16°	41.446	-	GE 140 FO-2RS	-
GEH-160 ES-2RS	160	260	135	80	16°	54.454	-	GE 160 FO-2RS	-
GEH-180 ES-2RS	180	290	155	100	14°	78.043	-	GE 180 FO-2RS	-
GEH-200 ES-2RS	200	320	165	100	15°	98.766	-	GE 200 FO-2RS	-
GEH-220 ES-2RS	220	340	175	100	16°	112.214	-	GE 220 FO-2RS	-
GEH-240 ES-2RS	240	370	190	110	15°	143.079	-	GE 240 FO-2RS	-
GEH-260 ES-2RS	260	400	205	120	15°	180.116	-	GE 260 FO-2RS	-
GEH-280 ES-2RS	280	430	210	120	15°	212.744	-	GE 280 FO-2RS	-

NOTE:
1.) GEH..ES-2RS - Split outer ring with lubrication holes and seals.



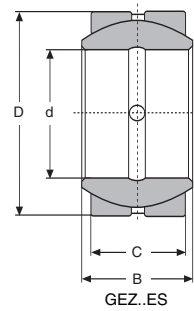
GEM..ES-2RS

SPHERICAL PLAIN BEARINGS - STEEL ON STEEL - METRIC DIMENSIONS - TWO SEALS

Consolidated No.	Dimensions (Metric)				Angle of Tilt	Approx. Wgt. (lbs.)	Interchange			
	d	D	B	C			FAG	INA	RBC	SKF
GEM-17 ES-2RS	17	30	21	10	3°	.130	GE17HO.2RS	-	MB17-ESS	GEM 17 ES-2RS
GEM-20 ES-2RS	20	35	24	12	3°	.160	GE20HO.2RS	GE 20 HO-2RS	MB20-ESS	GEM 20 ES-2RS
GEM-25 ES-2RS	25	42	29	16	3°	.290	GE25HO.2RS	GE 25 HO-2RS	MB25-ESS	GEM 25 ES-2RS
GEM-30 ES-2RS	30	47	30	18	3°	.370	GE30HO.2RS	GE 30 HO-2RS	MB30-ESS	GEM 30 ES-2RS
GEM-35 ES-2RS	35	55	35	20	3°	.550	GE35HO.2RS	GE 35 HO-2RS	MB35-ESS	GEM 35 ES-2RS
GEM-40 ES-2RS	40	62	38	22	3°	.770	GE40HO.2RS	GE 40 HO-2RS	MB40-ESS	GEM 40 ES-2RS
GEM-45 ES-2RS	45	68	40	25	3°	1.100	GE45HO.2RS	GE 45 HO-2RS	MB45-ESS	GEM 45 ES-2RS
GEM-50 ES-2RS	50	75	43	28	3°	1.300	GE50HO.2RS	GE 50 HO-2RS	MB50-ESS	GEM 50 ES-2RS
GEM-60 ES-2RS	60	90	54	36	3°	2.500	GE60HO.2RS	GE 60 HO-2RS	MB60-ESS	GEM 60 ES-2RS
GEM-70 ES-2RS	70	105	65	40	3°	3.600	GE70HO.2RS	GE 70 HO-2RS	MB70-ESS	GEM 70 ES-2RS
GEM-80 ES-2RS	80	120	74	45	3°	5.500	GE80HO.2RS	GE 80 HO-2RS	MB80-ESS	GEM 80 ES-2RS

NOTE:

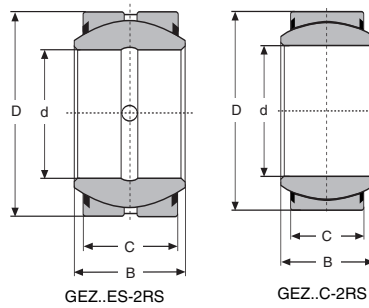
1.) GEM..ES-2RS series - Split outer ring with lubrication holes.



SPHERICAL PLAIN BEARINGS - STEEL ON STEEL - INCH DIMENSIONS

Consolidated No.	Dimensions (Inch)				Angle of Tilt	Approx. Wgt. (lbs.)	Interchange			
	d	D	B	C			INA	RBC	SKF	Torrington
GEZ-008 ES	.5000	.8750	.4375	.3750	14°	.050	GE 12 ZO	B8-L	GEZ 008 ES	5SF8
GEZ-010 ES	.6250	1.0625	.5469	.4687	14°	.080	GE 15 ZO	B10-L	GEZ 010 ES	6SF10
GEZ-012 ES	.7500	1.2500	.6562	.5625	14°	.120	GE 19 ZO	B12-L	GEZ 012 ES	7SF12
GEZ-014 ES	.8750	1.4375	.7656	.6562	14°	.190	GE 22 ZO	B14-L	GEZ 014 ES	8SF14
GEZ-100 ES	1.0000	1.6250	.8750	.7500	13°	.280	GE 25 ZO	B16-L	GEZ 100 ES	10SF16
GEZ-104 ES	1.2500	2.0000	1.0937	.9375	13°	.510	GE 31 ZO	B20-L	GEZ 104 ES	12SF20
GEZ-106 ES	1.3750	2.1875	1.1875	1.0312	13°	.760	GE 34 ZO	B22-L	GEZ 106 ES	13SF22
GEZ-108 ES	1.5000	2.4375	1.3125	1.1250	13°	.930	GE 38 ZO	B24-L	GEZ 108 ES	15SF24
GEZ-112 ES	1.7500	2.8125	1.5312	1.3125	13°	1.400	GE 44 ZO	B28-L	GEZ 112 ES	17SF28
GEZ-200 ES	2.0000	3.1875	1.7500	1.5000	12°	2.050	GE 50 ZO	B32-L	GEZ 200 ES	20SF32
GEZ-204 ES	2.2500	3.5625	1.9687	1.6875	12°	2.850	GE 57 ZO	B36-L	GEZ 204 ES	22SF36
GEZ-208 ES	2.5000	3.9375	2.1875	1.8750	12°	4.100	GE 63 ZO	B40-L	GEZ 208 ES	25SF40
GEZ-212 ES	2.7500	4.3750	2.4062	2.0625	12°	5.350	GE 69 ZO	B44-L	GEZ 212 ES	27SF44
GEZ-300 ES	3.0000	4.7500	2.6250	2.2500	12°	6.850	GE 76 ZO	B48-L	GEZ 300 ES	30SF48
GEZ-304 ES	3.2500	5.1250	2.8437	2.4375	12°	8.630	GE 82 ZO	B52-L	GEZ 304 ES	32SF52
GEZ-308 ES	3.5000	5.5000	3.0625	2.6250	11°	10.650	GE 88 ZO	B56-L	GEZ 308 ES	35SF56
GEZ-312 ES	3.7500	5.8750	3.2812	2.8125	11°	13.000	GE 95 ZO	B60-L	GEZ 312 ES	37SF60
GEZ-400 ES	4.0000	6.2500	3.5000	3.0000	11°	15.590	GE 101 ZO	B64-L	GEZ 400 ES	40SF64
GEZ-408 ES	4.5000	7.0000	3.9375	3.3750	7°	21.920	GE 114 ZO	B72-L	GEZ 408 ES	45SF72
GEZ-412 ES	4.7500	7.3750	4.1562	3.5625	7°	25.600	GE 120 ZO	-	GEZ 412 ES	47SF76
GEZ-500 ES	5.0000	7.7500	4.3750	3.7500	7°	29.710	GE 127 ZO	B80-L	GEZ 500 ES	50SF80
GEZ-600 ES	6.0000	8.7500	4.7500	4.1250	7°	38.800	GE 152 ZO	B96-L	GEZ 600 ES	60SF96

NOTE:
1.) GEZ..ES - Split outer ring with lubrication holes.



SPHERICAL PLAIN BEARINGS - STEEL ON STEEL - INCH DIMENSIONS - TWO SEALS

Consolidated No.	Dimensions (Inch)				Angle of Tilt	Approx. Wgt. (lbs.)	Interchange			
	d	D	B	C			ELGES	RBC	SKF	Torrington
GEZ-100 ES-2RS	1.0000	1.6250	.8750	.7500	7°	.280	GE 25 ZO 2RS	B16-LSS	GEZ 100 ES-2RS	10SF16-TT
GEZ-104 ES-2RS	1.2500	2.0000	1.0937	.9375	7°	.510	GE 31 ZO 2RS	B20-LSS	GEZ 104 ES-2RS	12SF20-TT
GEZ-106 ES-2RS	1.3750	2.1875	1.1875	1.0312	7°	.760	GE 34 ZO 2RS	B22-LSS	GEZ 106 ES-2RS	13SF22-TT
GEZ-108 ES-2RS	1.5000	2.4375	1.3125	1.1250	7°	.930	GE 38 ZO 2RS	B24-LSS	GEZ 108 ES-2RS	15SF24-TT
GEZ-112 ES-2RS	1.7500	2.8125	1.5312	1.3125	7°	1.400	GE 44 ZO 2RS	B28-LSS	GEZ 112 ES-2RS	17SF28-TT
GEZ-200 ES-2RS	2.0000	3.1875	1.7500	1.5000	7°	2.050	GE 50 ZO 2RS	B32-LSS	GEZ 200 ES-2RS	20SF32-TT
GEZ-204 ES-2RS	2.2500	3.4375	1.9687	1.6875	7°	2.850	GE 57 ZO 2RS	B36-LSS	GEZ 204 ES-2RS	22SF36-TT
GEZ-208 ES-2RS	2.5000	3.9375	2.1875	1.8750	7°	4.100	GE 63 ZO 2RS	B40-LSS	GEZ 208 ES-2RS	25SF40-TT
GEZ-212 ES-2RS	2.7500	4.3750	2.4062	2.0625	7°	5.350	GE 69 ZO 2RS	B44-LSS	GEZ 212 ES-2RS	27SF44-SS
GEZ-300 ES-2RS	3.0000	4.7500	2.6250	2.2500	7°	6.850	GE 76 ZO 2RS	B48-LSS	GEZ 300 ES-2RS	30SF48-SS
GEZ-304 ES-2RS	3.2500	5.1250	2.8437	2.4375	7°	8.630	GE 82 ZO 2RS	B52-LSS	GEZ 304 ES-2RS	32SF52-SS
GEZ-308 ES-2RS	3.5000	5.5000	3.0625	2.6250	7°	10.650	GE 88 ZO 2RS	B56-LSS	GEZ 308 ES-2RS	35SF56-SS
GEZ-312 ES-2RS	3.7500	5.8750	3.2812	2.8125	7°	13.000	GE 95 ZO 2RS	B60-LSS	GEZ 312 ES-2RS	37SF60-SS
GEZ-400 ES-2RS	4.0000	6.2500	3.5000	3.0000	7°	15.590	GE 101 ZO 2RS	B64-LSS	GEZ 400 ES-2RS	40SF64-SS
GEZ-408 ES-2RS	4.5000	7.0000	3.9375	3.3750	7°	21.920	GE 114 ZO 2RS	B72-9LSS	GEZ 408 ES-2RS	45SF72-SS
GEZ-412 ES-2RS	4.7500	7.3750	4.1562	3.5625	7°	25.600	-	-	GEZ 412 ES-2RS	47SF76-SS
GEZ-500 ES-2RS	5.0000	7.7500	4.3750	3.7500	7°	29.710	GE 127 ZO 2RS	B80-9LSS	GEZ 500 ES-2RS	50SF80-SS
GEZ-600 ES-2RS	6.0000	8.7500	4.7500	4.1250	7°	38.800	GE 152 ZO 2RS	B96-9LSS	GEZ 600 ES-2RS	60SF96-SS

NOTE:

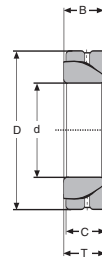
1.) GEZ..ES-2RS - Split outer ring with lubrication holes and seals.

SPHERICAL PLAIN BEARINGS - HIGH CAPACITY - INCH DIMENSIONS - TWO SEALS

Consolidated No.	Dimensions (Inch)				Angle of Tilt	Approx. Wgt. (lbs.)	Interchange	
	d	D	B	C			RBC	SKF
GEZ-100 C-2RS	1.0000	1.6250	.8750	.7500	7°	.280	B16-LNMSS	GEZ 100 TE.2RS
GEZ-104 C-2RS	1.2500	2.0000	1.0937	.9375	7°	.510	B20-LNMSS	GEZ 104 TE.2RS
GEZ-106 C-2RS	1.3750	2.1875	1.1875	1.0312	7°	.760	B22-LNMSS	GEZ 106 TE.2RS
GEZ-108 C-2RS	1.5000	2.4375	1.3125	1.1250	7°	.930	B24-LNMSS	GEZ 108 TE.2RS
GEZ-112 C-2RS	1.7500	2.8125	1.5312	1.3125	7°	1.400	B28-LNMSS	GEZ 112 TE.2RS
GEZ-200 C-2RS	2.0000	3.1875	1.7500	1.5000	7°	2.050	B32-LNMSS	GEZ 200 TE.2RS
GEZ-204 C-2RS	2.2500	3.4375	1.9687	1.6875	7°	2.850	B36-LNMSS	GEZ 204 TE.2RS
GEZ-208 C-2RS	2.5000	3.9375	2.1875	1.8750	7°	4.100	B40-LNMSS	GEZ 208 TE.2RS
GEZ-212 C-2RS	2.7500	4.3750	2.4062	2.0625	7°	5.350	B44-LNMSS	GEZ 212 TE.2RS
GEZ-300 C-2RS	3.0000	4.7500	2.6250	2.2500	7°	6.850	B48-LNMSS	GEZ 300 TE.2RS
GEZ-304 C-2RS	3.2500	5.1250	2.8437	2.4375	7°	8.630	B52-LNMSS	GEZ 304 TE.2RS
GEZ-308 C-2RS	3.5000	5.5000	3.0625	2.6250	7°	10.650	B56-LNMSS	GEZ 308 TE.2RS
GEZ-312 C-2RS	3.7500	5.8750	3.2812	2.8125	7°	13.000	B60-LNMSS	GEZ 312 TE.2RS
GEZ-400 C-2RS	4.0000	6.2500	3.5000	3.0000	7°	15.590	B64-LNMSS	GEZ 400 TE.2RS
GEZ-408 C-2RS	4.5000	7.0000	3.9375	3.3750	7°	21.920	B72-9LNMSS	GEZ 408 TE.2RS
GEZ-412 C-2RS	4.7500	7.3750	4.1562	3.5625	7°	25.600	-	GEZ 412 TE.2RS
GEZ-500 C-2RS	5.0000	7.7500	4.3750	3.7500	7°	29.710	B80-9LNMSS	GEZ 500 TE.2RS
GEZ-600 C-2RS	6.0000	8.7500	4.7500	4.1250	7°	38.800	B96-9LNMSS	GEZ 600 TE.2RS

NOTE:

1.) Inner ring has a hard chrome sliding surface. Outer ring sliding surface has PTFE-fabric coating. Other brands may have a liner of different material.



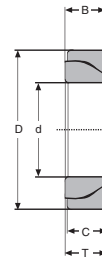
GE..SX

SPHERICAL PLAIN BEARINGS - ANGULAR CONTACT - STEEL ON STEEL - METRIC DIMENSIONS

Consolidated No.	Dimensions (Metric)					Approx. Wgt. (lbs.)	Interchange	
	d	D	B	C	T		ELGES INA	RBC
GE-25 SX	25	47	14	14	15	.290	GE 25 SX	MB25-SA
GE-28 SX	28	52	15	15	16	.380	GE 28 SX	-
GE-30 SX	30	55	16	16	17	.470	GE 30 SX	MB30-SA
GE-32 SX	32	58	16	16	17	.510	GE 32 SX	-
GE-35 SX	35	62	17	17	18	.600	GE 35 SX	MB35-SA
GE-40 SX	40	68	18	18	19	.710	GE 40 SX	MB40-SA
GE-45 SX	45	75	19	19	20	.910	GE 45 SX	MB45-SA
GE-50 SX	50	80	19	19	20	1.000	GE 50 SX	MB50-SA
GE-55 SX	55	90	22	22	23	1.480	GE 55 SX	MB55-SA
GE-60 SX	60	95	22	22	23	1.590	GE 60 SX	MB60-SA
GE-65 SX	65	100	22	22	23	1.680	GE 65 SX	MB65-SA
GE-70 SX	70	110	24	24	25	2.210	GE 70 SX	MB70-SA
GE-75 SX	75	115	24	24	25	2.430	GE 75 SX	-
GE-80 SX	80	125	27	27	29	3.310	GE 80 SX	MB80-SA
GE-85 SX	85	130	27	27	29	3.530	GE 85 SX	-
GE-90 SX	90	140	30	30	32	4.630	GE 90 SX	MB90-SA
GE-95 SX	75	145	30	30	32	4.850	GE 95 SX	-
GE-100 SX	100	150	30	30	32	5.070	GE 100 SX	MB100-SA
GE-105 SX	105	160	33	33	35	6.400	GE 105 SX	-
GE-110 SX	110	170	36	36	38	7.940	GE 110 SX	MB110-SA
GE-120 SX	120	180	36	36	38	8.600	GE 120 SX	MB120-SA
GE-130 SX	130	200	42	42	45	13.010	GE 130 SX	MB130-SA
GE-140 SX	140	210	42	42	45	13.890	GE 140 SX	MB140-SA
GE-150 SX	150	225	45	45	48	16.980	GE 150 SX	MB150-SA
GE-160 SX	160	240	48	48	51	20.730	GE 160 SX	MB160-SA
GE-170 SX	170	260	54	54	57	26.460	GE 170 SX	MB170-SA
GE-180 SX	180	280	61	61	64	37.480	GE 180 SX	MB180-SA
GE-190 SX	190	290	61	61	64	39.690	GE 190 SX	-
GE-200 SX	200	310	66	66	70	49.610	GE 200 SX	-
GE-220 SX	220	340	72	72	76	65.040	GE 220 SX	-
GE-240 SX	240	360	72	72	76	69.450	GE 240 SX	-

NOTE:

1.) Non-critical dimensions, such as the "B" and "C" dimensions, may vary slightly between manufacturers.



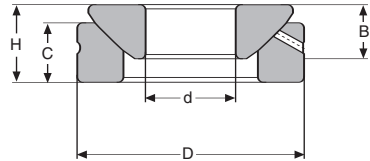
GE..SW

SPHERICAL PLAIN BEARINGS - ANGULAR CONTACT - HIGH CAPACITY - METRIC DIMENSIONS

Consolidated No.	Dimensions (Metric)					Approx. Wgt. (lbs.)	Interchange	
	d	D	B	C	T		ELGES INA	SKF
GE-25 SW	25	47	14	14	15	.310	GE 25 SW	GAC 25 F
GE-28 SW	28	52	15	15	16	.400	GE 28 SW	GAC 28 F
GE-30 SW	30	55	16	16	17	.490	GE 30 SW	GAC 30 F
GE-32 SW	32	58	16	16	17	.530	GE 32 SW	GAC 32 F
GE-35 SW	35	62	17	17	18	.620	GE 35 SW	GAC 35 F
GE-40 SW	40	68	18	18	19	.750	GE 40 SW	GAC 40 F
GE-45 SW	45	75	19	19	20	.950	GE 45 SW	GAC 45 F
GE-50 SW	50	80	19	19	20	1.040	GE 50 SW	GAC 50 F
GE-55 SW	55	90	22	22	23	1.550	GE 55 SW	GAC 55 F
GE-60 SW	60	95	22	22	23	1.660	GE 60 SW	GAC 60 F
GE-65 SW	65	100	22	22	23	1.740	GE 65 SW	GAC 65 F
GE-70 SW	70	110	24	24	25	2.210	GE 70 SW	GAC 70 F
GE-75 SW	75	115	24	24	25	2.430	GE 75 SW	GAC 75 F
GE-80 SW	80	125	27	27	29	3.520	GE 80 SW	GAC 80 F
GE-85 SW	85	130	27	27	29	3.750	GE 85 SW	GAC 85 F
GE-90 SW	90	140	30	30	32	4.850	GE 90 SW	GAC 90 F
GE-95 SW	95	145	30	30	32	5.070	GE 95 SW	GAC 95 F
GE-100 SW	100	150	30	30	32	5.300	GE 100 SW	GAC 100 F
GE-105 SW	105	160	33	33	35	6.620	GE 105 SW	GAC 105 F
GE-110 SW	110	170	36	36	38	8.160	GE 110 SW	GAC 110 F
GE-120 SW	120	180	36	36	38	8.820	GE 120 SW	GAC 120 F
GE-130 SW	130	200	42	42	45	13.230	GE 130 SW	-
GE-140 SW	140	210	42	42	45	14.110	GE 140 SW	-
GE-150 SW	150	225	45	45	48	17.420	GE 150 SW	-
GE-160 SW	160	240	48	48	51	21.170	GE 160 SW	-
GE-170 SW	170	260	54	54	57	28.660	GE 170 SW	-
GE-180 SW	180	280	61	61	64	38.580	GE 180 SW	-
GE-190 SW	190	290	61	61	64	39.690	GE 190 SW	-
GE-200 SW	200	310	66	66	70	50.710	GE 200 SW	-
GE-220 SW	220	340	72	72	76	66.140	GE 220 SW	-
GE-240 SW	240	360	72	72	76	71.650	GE 240 SW	-
GE-260 SW	260	400	83	83	87	105.820	GE 260 SW	-
GE-280 SW	280	420	83	83	87	112.440	GE 280 SW	-
GE-300 SW	300	460	96	96	100	160.940	GE 300 SW	-

NOTE:

- 1.) Inner ring has a hard chrome sliding surface. Outer ring sliding surface has PTFE-fabric coating. Other brands may have a liner of different material.
- 2.) Non-critical dimensions, such as the "B" and "C" dimensions, may vary slightly between manufacturers.



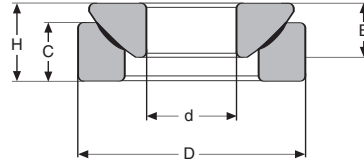
GE..AX

SPHERICAL PLAIN BEARINGS - THRUST - STEEL ON STEEL - METRIC DIMENSIONS

Consolidated No.	Dimensions (Metric)					Angle of Tilt	Approx. Wgt. (lbs.)	Interchange ELGES INA
	d	D	B	C	H			
GE-10 AX	10	30	7.9	6	9.5	10°	.090	GE 10 AX
GE-12 AX	12	35	9.3	9	13.0	9°	.160	GE 12 AX
GE-15 AX	15	42	10.7	11	15.0	7°	.270	GE 15 AX
GE-17 AX	17	47	11.5	11	16.0	6°	.360	GE 17 AX
GE-20 AX	20	55	14.3	13	20.0	6°	.550	GE 20 AX
GE-25 AX	25	62	16.0	17	22.5	7°	.840	GE 25 AX
GE-30 AX	30	75	18.0	19	26.0	6°	1.440	GE 30 AX
GE-35 AX	35	90	22.0	20	28.0	6°	2.210	GE 35 AX
GE-40 AX	40	105	27.0	22	32.0	6°	3.530	GE 40 AX
GE-45 AX	45	120	31.0	25	36.5	6°	5.290	GE 45 AX
GE-50 AX	50	130	33.5	32	42.5	5°	7.280	GE 50 AX
GE-60 AX	60	150	37.0	33	45.0	7°	9.920	GE 60 AX
GE-70 AX	70	160	40.0	36	50.0	6°	12.130	GE 70 AX
GE-80 AX	80	180	42.0	36	50.0	6°	15.430	GE 80 AX
GE-100 AX	100	210	50.0	42	59.0	7°	23.150	GE 100 AX
GE-120 AX	120	230	52.0	45	64.0	8°	28.660	GE 120 AX
GE-140 AX	140	260	61.0	50	72.0	6°	39.690	GE 140 AX
GE-160 AX	160	290	65.0	52	77.0	7°	50.710	GE 160 AX
GE-180 AX	180	320	70.0	60	86.0	8°	68.350	GE 180 AX
GE-200 AX	200	340	74.0	60	87.0	8°	74.960	GE 200 AX

NOTE:

1.) Non-critical dimensions, such as the "B" and "C" dimensions, may vary slightly between manufacturers.



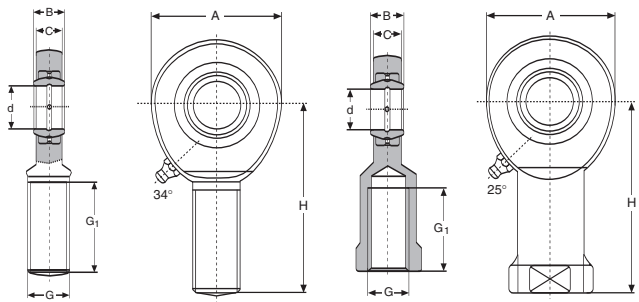
GE..AW

SPHERICAL PLAIN BEARINGS - THRUST - HIGH CAPACITY - METRIC DIMENSIONS

Consolidated No.	Dimensions (Metric)					Angle of Tilt	Approx. Wgt. (lbs.)	Interchange	
	d	D	B	C	H			ELGES INA	SKF
GE-10 AW	10	30	7.9	6	9.5	10°	.090	GE 10 AW	GX10F
GE-12 AW	12	35	9.3	9	13.0	9°	.160	GE 12 AW	GX12F
GE-15 AW	15	42	10.7	11	15.0	7°	.270	GE 15 AW	GX15F
GE-17 AW	17	47	11.5	11	16.0	6°	.360	GE 17 AW	GX17F
GE-20 AW	20	55	14.3	13	20.0	6°	.560	GE 20 AW	GX20F
GE-25 AW	25	62	16.0	17	22.5	7°	.840	GE 25 AW	GX25F
GE-30 AW	30	75	18.0	19	26.0	6°	1.440	GE 30 AW	GX30F
GE-35 AW	35	90	22.0	20	28.0	6°	2.050	GE 35 AW	GX35F
GE-40 AW	40	105	27.0	22	32.0	6°	3.530	GE 40 AW	GX40F
GE-45 AW	45	120	31.0	25	36.5	6°	5.300	GE 45 AW	GX45F
GE-50 AW	50	130	33.5	32	42.5	5°	7.280	GE 50 AW	GX50F
GE-60 AW	60	150	37.0	33	45.0	7°	9.920	GE 60 AW	GX60F
GE-70 AW	70	160	40.0	36	50.0	6°	12.130	GE 70 AW	GX70F
GE-80 AW	80	180	42.0	36	50.0	6°	15.440	GE 80 AW	GX80F
GE-100 AW	100	210	50.0	42	59.0	7°	23.150	GE 100 AW	GX100F
GE-120 AW	120	230	52.0	45	64.0	8°	28.660	GE 120 AW	GX120F
GE-140 AW	140	260	61.0	50	72.0	6°	39.690	GE 140 AW	-
GE-160 AW	160	290	65.0	52	77.0	7°	50.710	GE 160 AW	-
GE-180 AW	180	320	70.0	60	86.0	8°	68.350	GE 180 AW	-
GE-200 AW	200	340	74.0	60	87.0	8°	74.960	GE 200 AW	-
GE-220 AW	220	370	82.0	67	97.0	7°	98.110	GE 220 AW	-
GE-240 AW	240	400	87.0	73	103.0	6°	121.260	GE 240 AW	-
GE-260 AW	260	430	95.0	80	115.0	7°	152.120	GE 260 AW	-
GE-280 AW	280	460	100.0	85	110.0	4°	180.780	GE 280 AW	-
GE-300 AW	300	480	100.0	90	110.0	3°	191.800	GE 300 AW	-
GE-320 AW	320	520	105.0	91	116.0	4°	240.310	GE 320 AW	-
GE-340 AW	340	540	105.0	91	116.0	4°	251.330	GE 340 AW	-
GE-360 AW	360	560	115.0	95	125.0	4°	284.400	GE 360 AW	-

NOTE:

- 1.) Inner ring has a hard chrome sliding surface. Outer ring sliding surface has PTFE-fabric coating. Other brands may have a liner of different material.
- 2.) Non-critical dimensions, such as the "B" and "C" dimensions, may vary slightly between manufacturers.



ROD ENDS - METRIC DIMENSIONS - STEEL ON STEEL WITH MALE THREADS

Consolidated No.		Dimensions (Metric)							Approx. Wgt. (lbs.)	Interchange					
Right Hand Thread	Left Hand Thread	d	A	B	C	G	G1	H	ELGES		FAG		SKF		
SA 6 E	SAL 6 E	6	21	6	4	M6x1	16	36	.030	GAR 6 DO	GAL 6 DO	SA 6E	SAL6E	SA 6 E	SAL 6 E
SA 8 E	SAL 8 E	8	24	8	5	M8x1.25	21	42	.060	GAR 8 DO	GAL 8 DO	SA 8E	SAL8E	SA 8 E	SAL 8 E
SA 10 E	SAL 10 E	10	29	9	6	M10x1.5	26	48	.100	GAR 10 DO	GAL 10 DO	SA 10E	SAL10E	SA 10 E	SAL 10 E
SA 12 E	SAL 12 E	12	34	10	7	M12x1.75	28	54	.140	GAR 12 DO	GAL 12 DO	SA 12E	SAL12E	SA 12 E	SAL 12 E
SA 15 ES	SAL 15 ES	15	40	12	9	M14x2	34	63	.260	GAR 15 DO	GAL 15 DO	SA15ES	SAL15ES	SA 15 ES	SAL 15 ES
* SA 17 ES	SAL 17 ES	17	46	14	10	M16x2	36	69	.370	GAR 17 DO	GAL 17 DO	SA17ES	SAL17ES	SA 17 ES	SAL 17 ES
* SA 20 ES	SAL 20 ES	20	53	16	12	M20x1.5	43	78	.610	GAR 20 DO	GAL 20 DO	SA20ES	SAL20ES	SA 20 ES	SAL 20 ES
* SA 25 ES	SAL 25 ES	25	64	20	16	M24x2	53	94	1.100	GAR 25 DO	GAL 25 DO	SA25ES	SAL25ES	SA 25 ES	SAL 25 ES
* SA 30 ES	SAL 30 ES	30	73	22	18	M30x2	65	110	1.850	GAR 30 DO	GAL 30 DO	SA30ES	SAL30ES	SA 30 ES	SAL 30 ES
* SA 35 ES	SAL 35 ES	35	82	25	20	M36x3	82	130	2.850	GAR 35 DO	GAL 35 DO	-	-	SA 35 ES	SAL 35 ES
SAC 40 ES	SALC 40 ES	40	92	28	23	M39x3	86	150	3.968	GAR 40 DO	GAL 40 DO	-	-	-	-
* SA 40 ES	SAL 40 ES	40	92	28	22	M42x3	90	145	4.200	-	-	-	-	SA 40 ES	SAL 40 ES
SAC 45 ES	SALC 45 ES	45	102	32	27	M42x3	94	163	5.732	GAR 45 DO	GAL 45 DO	-	-	-	-
* SA 45 ES	SAL 45 ES	45	102	32	25	M45x3	95	185	5.600	-	-	-	-	SA 45 ES	SAL 45 ES
SAC 50 ES	SALC 50 ES	50	112	35	30	M45x3	107	185	7.500	GAR 50 DO	GAL 50 DO	-	-	-	-
* SA 50 ES	SAL 50 ES	50	112	35	28	M52x3	110	195	8.100	-	-	-	-	SA 50 ES	SAL 50 ES
SAC 60 ES	SALC 60 ES	60	135	44	38	M52X3	115	210	13.000	GAR 60 DO	GAL 60 DO	-	-	-	-
* SA 60 ES	SAL 60 ES	60	135	44	36	M60x4	120	225	13.500	-	-	-	-	SA 60 ES	SAL 60 ES
SAC 70 ES	SALC 70 ES	70	160	49	42	M56x4	125	235	18.000	GAR 70 DO	GAL 70 DO	-	-	-	-
* SA 70 ES	SAL 70 ES	70	160	49	40	M72x4	132	265	22.000	-	-	-	-	SA 70 ES	SAL 70 ES
SAC 80 ES	SALC 80 ES	80	180	55	47	M64x4	140	270	26.500	GAR 80 DO	GAL 80 DO	-	-	-	-
* SA 80 ES	SAL 80 ES	80	180	55	45	M80x4	147	295	32.000	-	-	-	-	SA 80 ES	SAL 80 ES

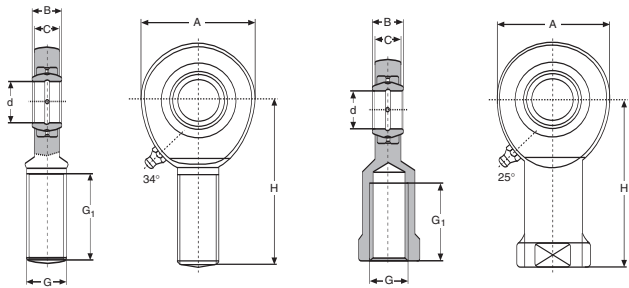
ROD ENDS - METRIC DIMENSIONS - STEEL ON STEEL WITH FEMALE THREADS

SI 6 E	SIL 6 E	6	21	6	4	M6x1	11	30	.040	GIR 6 DO	GIL 6 DO	SI6E	SIL6E	SI 6 E	SIL 6 E
SI 8 E	SIL 8 E	8	24	8	5	M8x1.25	15	36	.080	GIR 8 DO	GIL 8 DO	SI8E	SIL8E	SI 8 E	SIL 8 E
SI 10 E	SIL 10 E	10	29	9	6	M10x1.5	15	43	.130	GIR 10 DO	GIL 10 DO	SI10E	SIL10E	SI 10 E	SIL 10 E
SI 12 E	SIL 12 E	12	34	10	7	M12x1.75	18	50	.200	GIR 12 DO	GIL 12 DO	SI12E	SIL12E	SI 12 E	SIL 12 E
SI 15 ES	SIL 15 ES	15	40	12	9	M14x2	21	61	.350	GIR 15 DO	GIL 15 DO	SI15ES	SIL15ES	SI 15 ES	SIL 15 ES
* SI 17 ES	SIL 17 ES	17	46	14	10	M16x2	24	67	.500	GIR 17 DO	GIL 17 DO	SI17ES	SIL17ES	SI 17 ES	SIL 17 ES
* SI 20 ES	SIL 20 ES	20	53	16	12	M20x1.5	30	77	.700	GIR 20 DO	GIL 20 DO	SI20ES	SIL20ES	SI 20 ES	SIL 20 ES
* SI 25 ES	SIL 25 ES	25	64	20	16	M24x2	36	94	1.350	GIR 25 DO	GIL 25 DO	SI25ES	SIL25ES	SI 25 ES	SIL 25 ES
* SI 30 ES	SIL 30 ES	30	73	22	18	M30x2	45	110	2.150	GIR 30 DO	GIL 30 DO	SI30ES	SIL30ES	SI 30 ES	SIL 30 ES
* SI 35 ES	SIL 35 ES	35	82	25	20	M36x3	54	130	3.100	GIR 35 DO	GIL 35 DO	-	-	SI 35 ES	SIL 35 ES
SIC 40 ES	SILC 40 ES	40	92	28	23	M39x3	65	142	4.409	GIR 40 DO	GIL 40 DO	-	-	-	-
* SI 40 ES	SIL 40 ES	40	92	28	22	M42x3	63	145	4.850	-	-	-	-	SI 40 ES	SIL 40 ES
SIC 45 ES	SILC 45 ES	45	102	32	27	M42x3	65	145	5.500	GIR 45 DO	GIL 45 DO	-	-	-	-
* SI 45 ES	SIL 45 ES	45	102	32	25	M45x3	65	165	7.050	-	-	-	-	SI 45 ES	SIL 45 ES
SIC 50 ES	SILC 50 ES	50	112	35	30	M45x3	68	160	7.716	GIR 50 DO	GIL 50 DO	-	-	-	-
* SI 50 ES	SIL 50 ES	50	112	35	28	M52x3	68	195	9.000	-	-	-	-	SI 50 ES	SIL 50 ES
SIC 60 ES	SILC 60 ES	60	135	44	38	M52X3	70	175	12.125	GIR 60 DO	GIL 60 DO	-	-	-	-
* SI 60 ES	SIL 60 ES	60	135	44	36	M60x4	70	225	15.500	-	-	-	-	SI 60 ES	SIL 60 ES
SIC 70 ES	SILC 70 ES	70	160	49	42	M56x4	80	200	18.960	GIR 70 DO	GIL 70 DO	-	-	-	-
* SI 70 ES	SIL 70 ES	70	160	49	40	M72x4	80	265	23.000	-	-	-	-	SI 70 ES	SIL 70 ES
SIC 80 ES	SILC 80 ES	80	180	55	47	M64x4	85	230	26.500	GIR 80 DO	GIL 80 DO	-	-	-	-
* SI 80 ES	SIL 80 ES	80	180	55	45	M80x4	85	295	33.000	-	-	-	-	SI 80 ES	SIL 80 ES

*Available sealed add suffix - "2RS".

NOTE:

- 1.) Suffix "E" - without relubrication holes.
- 2.) Suffix "ES" - with relubrication holes.



ROD ENDS - METRIC DIMENSIONS - HIGH CAPACITY WITH MALE THREADS

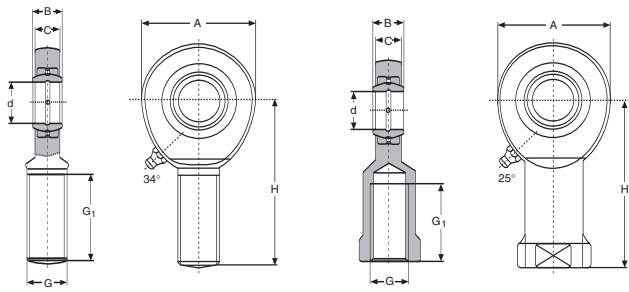
Consolidated No.		Dimensions (Metric)						Approx. Wgt. (lbs.)	Interchange				
Right Hand Thread	Left Hand Thread	d	A	B	C	G	G1	H	ELGES		SKF		
SA 6 C	SAL 6 C	6	21	6	5	M6x1	18	36	.037	GAR 6 UK	GAL 6 UK	SA 6 C	SAL 6 C
SA 8 C	SAL 8 C	8	24	8	6	M8x1.25	18	36	.064	GAR 8 UK	GAL 8 UK	SA 8 C	SAL 6 C
SA 10 C	SAL 10 C	10	29	9	7	M10x1.5	26	48	.112	GAR 10 UK	GAL10 UK	SA 10 C	SAL 6 C
SA 12 C	SAL 12 C	12	34	10	8	M12x1.75	28	54	.190	GAR 12 UK	GAL 12 UK	SA 12 C	SAL 6 C
SA 15 C	SAL 15 C	15	40	12	10	M14x2	34	63	.309	GAR 15 UK	GAL15 UK	SA 15 C	SAL 6 C
SA 17 C	SAL 17 C	17	46	14	11	M16x2	36	69	.419	GAR 17 UK	GAL 17 UK	SA 17 C	SAL 6 C
SA 20 C	SAL 20 C	20	53	16	13	M20x1.5	43	78	.683	GAR 20 UK	GAL 20 UK	SA 20 C	SAL 6 C
SA 25 C	SAL 25 C	25	64	20	17	M24x2	53	94	1.235	GAR 25 UK	GAL 25 UK	SA 25 C	SAL 6 C
SA 30 C	SAL 30 C	30	73	22	19	M30x2	65	110	1.962	GAR 30 UK	GAL 30 UK	SA 30 C	SAL 6 C
SA 35 C	SAL 35 C	35	82	25	21	M36x3	82	140	3.086	GAR 35 UK	GAL 35 UK	SA 35 C	SAL 6 C
SAC 40 C	SALC 40 C	40	92	28	23	M39x3	86	150	3.968	GAR 40 UK	GAL 40 UK	-	-
SA 40 C	SAL 40 C	40	92	28	23	M42x3	86	150	4.200	-	-	SA 40 C	SAL 6 C
SAC 45 C	SALC 45 C	45	102	32	27	M42x3	94	163	5.732	GAR 45 UK	GAL 45 UK	-	-
SA 45 C	SAL 45 C	45	102	32	27	M45x3	94	163	5.600	-	-	SA 45 C	SAL 6 C
SAC 50 C	SALC 50 C	50	112	35	30	M45x3	107	185	7.500	GAR 50 UK	GAL 50 UK	-	-
SA 50 C	SAL 50 C	50	112	35	30	M52x3	107	185	8.100	-	-	SA 50 C	SAL 6 C
SAC 60 C	SALC 60 C	60	135	44	38	M52x3	115	210	13.000	GAR 60 UK	GAL 60 UK	-	-
SA 60 C	SAL 60 C	60	135	44	38	M60x4	115	210	13.500	-	-	SA 60 C	SAL 6 C
SAC 70 C	SALC 70 C	70	160	49	42	M56x4	125	235	18.000	GAR 70 UK	GAL 70 UK	-	-
SA 70 C	SAL 70 C	70	160	49	42	M72x4	125	235	22.000	-	-	SA 70 C	SAL 6 C
SAC 80 C	SALC 80 C	80	180	55	47	M64x4	140	270	26.500	GAR 80 UK	GAL 80 UK	-	-
SA 80 C	SAL 80 C	80	180	55	47	M80x4	140	270	32.000	-	-	SA 80 C	SAL 6 C

ROD ENDS - METRIC DIMENSIONS - HIGH CAPACITY WITH FEMALE THREADS

SI 6 C	SIL 6 C	6	21	6	5	M6x1	11	30	.046	GIR 6 UK	GIL 6 UK	SI 6 C	SI L6 C
SI 8 C	SIL 8 C	8	24	8	6	M8x1.25	15	36	.086	GIR 8 UK	GIL 8 UK	SI 8 C	SI L8 C
SI 10 C	SIL 10 C	10	29	9	7	M10x1.5	20	43	.134	GIR 10 UK	GIL 10 UK	SI 10 C	SI L10 C
SI 12 C	SIL 12 C	12	34	10	8	M12x1.75	23	50	.212	GIR 12 UK	GIL 12 UK	SI 12 C	SI L12 C
SI 15 C	SIL 15 C	15	40	12	10	M14x2	30	61	.397	GIR 15 UK	GIL 15 UK	SI 15 C	SI L15 C
SI 17 C	SIL 17 C	17	46	14	11	M16x2	34	67	.485	GIR 17 UK	GIL 17 UK	SI 17 C	SI L17 C
SI 20 C	SIL 20 C	20	53	16	13	M20x1.5	40	77	.772	GIR 20 UK	GIL 20 UK	SI 20 C	SI L20 C
SI 25 C	SIL 25 C	25	64	20	17	M24x2	48	94	1.411	GIR 25 UK	GIL 25 UK	SI 25 C	SI L25 C
SI 30 C	SIL 30 C	30	73	22	19	M30x2	56	110	2.050	GIR 30 UK	GIL 30 UK	SI 30 C	SI L30 C
SI 35 C	SIL 35 C	35	82	25	21	M36x3	60	125	2.866	GIR 35 UK	GIL 35 UK	SI 35 C	SI L35 C
SIC 40 C	SILC 40 C	40	92	28	23	M39x3	65	142	4.409	GIR 40 UK	GIL 40 UK	-	-
SI 40 C	SIL 40 C	40	92	28	23	M42x3	65	142	4.850	-	-	SI 40 C	SI L40 C
SIC 45 C	SILC 45 C	45	102	32	27	M42x3	65	145	5.512	GIR 45 UK	GIL 45 UK	-	-
SI 45 C	SIL 45 C	45	102	32	27	M45x3	65	145	7.050	-	-	SI 45 C	SI L45 C
SIC 50 C	SILC 50 C	50	112	35	30	M45x3	68	160	7.716	GIR 50 UK	GIL 50 UK	-	-
SI 50 C	SIL 50 C	50	112	35	30	M52x3	68	160	9.000	-	-	SI 50 C	SI L50 C
SIC 60 C	SILC 60 C	60	135	44	38	M52x3	70	175	12.125	GIR 60 UK	GIL 60 UK	-	-
SI 60 C	SIL 60 C	60	135	44	38	M60x4	70	175	15.500	-	-	SI 60 C	SI L60 C
SIC 70 C	SILC 70 C	70	160	49	42	M56x4	80	200	18.960	GIR 70 UK	GIL 70 UK	-	-
SI 70 C	SIL 70 C	70	160	49	42	M72x4	80	200	23.000	-	-	SI 70 C	SI L70 C
SIC 80 C	SILC 80 C	80	180	55	47	M64x4	85	230	26.455	GIR 80 UK	GIL80 UK	-	-
SI 80 C	SIL 80 C	80	180	55	47	M80x4	85	230	33.000	-	-	SI 80 C	SI L80 C

NOTE:

1.) Inner ring has a hard chrome sliding surface. Outer ring sliding surface has PTFE-fabric coating. Other brands may have a liner of different material.



ROD ENDS - INCH DIMENSIONS - STEEL ON STEEL WITH MALE THREADS

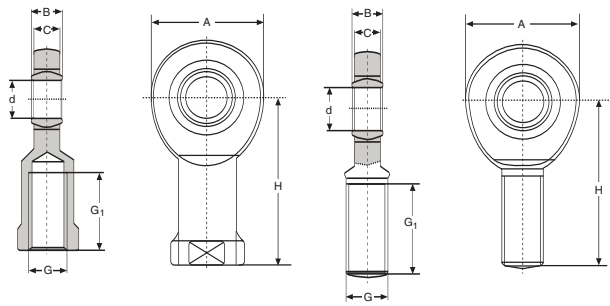
Consolidated No.		Dimensions (Inch)							Approx. Wgt. (lbs.)	Interchange					
Right Hand Thread	Left Hand Thread	d	A	B	C	G	G1	H	Aurora	Heim	Spherco				
TRE-2	TREL-2	.1250	.4687	.2500	.1875	.1380	.5000	.9375	.020	-	-	HM-2	HML-2	TRE-2	TREL-2
TRE-2A	TREL-2A	.1562	.5625	.2812	.2187	.1640	.6250	1.1250	.020	-	-	HM-2A	HML-2A	TRE-2A	TREL-2A
TRE-3	TREL-3	.1900	.6250	.3125	.2500	.1900	.7500	1.2500	.030	MM-3	MB-3	HM-3	HML-3	TRE-3	TREL-3
TRE-4	TREL-4	.2500	.7500	.3750	.2812	.2500	1.0000	1.5625	.050	MM-4	MB-4	HM-4	HML-4	TRE-4	TREL-4
TRE-5	TREL-5	.3125	.8750	.4375	.3437	.3125	1.2500	1.8750	.080	MM-5	MB-5	HM-5	HML-5	TRE-5	TREL-5
TRE-6	TREL-6	.3750	1.0000	.5000	.4062	.3750	1.2500	1.9375	.120	MM-6	MB-6	HM-6	HML-6	TRE-6	TREL-6
TRE-7	TREL-7	.4375	1.1250	.5625	.4375	.4375	1.3750	2.1250	.170	MM-7	MB-7	HM-7	HML-7	TRE-7	TREL-7
TRE-8	TREL-8	.5000	1.3125	.6250	.5000	.5000	1.5000	2.4375	.260	MM-8	MB-8	HM-8	HML-8	TRE-8	TREL-8
TRE-10	TREL-10	.6250	1.5000	.7500	.5625	.6250	1.6250	2.6250	.410	MM-10	MB-10	HM-10	HML-10	TRE-10	TREL-10
TRE-12	TREL-12	.7500	1.7500	.8750	.6875	.7500	1.7500	2.8750	.640	MM-12	MB-12	HM-12	HML-12	TRE-12	TREL-12
TRE-16	TREL-16	1.0000	2.7500	1.3750	1.0000	1.2500	2.1250	4.1250	2.250	MM-16	MB-16	HM-16	HML-16	TRE-16	TREL-16

ROD ENDS - INCH DIMENSIONS - STEEL ON STEEL WITH FEMALE THREADS

TR-2	TRL-2	.1250	.4687	.2500	.1875	.1380	.3750	.8125	.020	-	-	HF-2	HFL-2	TR-2	TRL-2
TR-2A	TRL-2A	.1562	.5625	.2812	.2187	.1640	.3750	.8750	.020	-	-	HF-2A	HFL-2A	TR-2A	TRL-2A
TR-3	TRL-3	.1900	.6250	.3125	.2500	.1900	.5625	1.0625	.030	MW-3	MG-3	HF-3	HFL-3	TR-3	TRL-3
TR-4	TRL-4	.2500	.7500	.3750	.2812	.2500	.7500	1.3125	.050	MW-4	MG-4	HF-4	HFL-4	TR-4	TRL-4
TR-5	TRL-5	.3125	.8750	.4375	.3437	.3135	.7500	1.3750	.080	MW-5	MG-5	HF-5	HFL-5	TR-5	TRL-5
TR-6	TRL-6	.3750	1.0000	.5000	.4062	.3750	.9375	1.6250	.120	MW-6	MG-6	HF-6	HFL-6	TR-6	TRL-6
TR-7	TRL-7	.4375	1.1250	.5625	.4375	.4375	1.0625	1.8125	.170	MW-7	MG-7	HF-7	HFL-7	TR-7	TRL-7
TR-8	TRL-8	.5000	1.3125	.6250	.5000	.5000	1.1875	2.1250	.260	MW-8	MG-8	HF-8	HFL-8	TR-8	TRL-8
TR-10	TRL-10	.6250	1.5000	.7500	.5625	.6250	1.5000	2.5000	.410	MW-10	MG-10	HF-10	HFL-10	TR-10	TRL-10
TR-12	TRL-12	.7500	1.7500	.8750	.6875	.7500	1.7500	2.8750	.640	MW-12	MG-12	HF-12	HFL-12	TR-12	TRL-12
TR-16	TRL-16	1.0000	2.7500	1.3750	1.0000	1.2500	2.1250	4.1250	2.250	MW-16	MG-16	HF-16	HFL-16	TR-16	TRL-16

NOTE:

- 1.) Sizes TRE-2 & TRE-2A have Class 3-UNC threads. All other sizes have Class 3-UNF threads.
- 2.) Add suffix "S" for relubrication feature. Example TRE-16 S



ROD ENDS - INCH DIMENSIONS - STEEL ON STEEL WITH MALE THREADS - HIGH CAPACITY

Consolidated No.		Dimensions (Inch)							Approx. Wgt. (lbs.)	Interchange					
Right Hand Thread	Left Hand Thread	d	A	B	C	G	G1	H	Aurora	Heim	Spherco				
CFM-3	CFML-3	.1900	.6250	.3125	.2500	.1900	.7500	1.2500	.030	AM-3	AB-3	HM-3C	HML-3C	CFM-3	CFML-3
CFM-4	CFML-4	.2500	.7500	.3750	.2812	.2500	1.0000	1.5625	.050	AM-4	AB-4	HM-4C	HML-4C	CFM-4	CFML-4
CFM-5	CFML-5	.3125	.8750	.4375	.3437	.3125	1.2500	1.8750	.080	AM-5	AB-5	HM-5C	HML-5C	CFM-5	CFML-5
CFM-6	CFML-6	.3750	1.0000	.5000	.4062	.3750	1.2500	1.9375	.110	AM-6	AB-6	HM-6C	HML-6C	CFM-6	CFML-6
CFM-7	CFML-7	.4375	1.1250	.5625	.4375	.4375	1.3750	2.1250	.160	AM-7	AB-7	HM-7C	HML-7C	CFM-7	CFML-7
CFM-8	CFML-8	.5000	1.3125	.6250	.5000	.5000	1.5000	2.4375	.240	AM-8	AB-8	HM-8C	HML-8C	CFM-8	CFML-8
CFM-10	CFML-10	.6250	1.5000	.7500	.5625	.6250	1.6250	2.6250	.400	AM-10	AB-10	HM-10C	HML-10C	CFM-10	CFML-10
CFM-12	CFML-12	.7500	1.7500	.8750	.6875	.7500	1.7500	2.8750	.630	AM-12	AB-12	HM-12C	HML-12C	CFM-12	CFML-12

ROD ENDS - INCH DIMENSIONS - STEEL ON STEEL WITH FEMALE THREADS - HIGH CAPACITY

CFF-3	CFFL-3	.1900	.6250	.3125	.2500	.1900	.5000	1.0625	.030	AW-3	AG-3	HF-3C	HFL-3C	CFF-3	CFFL-3
CFF-4	CFFL-4	.2500	.7500	.3750	.2812	.2500	.6250	1.3125	.050	AW-4	AG-4	HF-4C	HFL-4C	CFF-4	CFFL-4
CFF-5	CFFL-5	.3125	.8750	.4375	.3437	.3125	.6250	1.3750	.080	AW-5	AG-5	HF-5C	HFL-5C	CFF-5	CFFL-5
CFF-6	CFFL-6	.3750	1.0000	.5000	.4062	.3750	.6875	1.6250	.120	AW-6	AG-6	HF-6C	HFL-6C	CFF-6	CFFL-6
CFF-7	CFFL-7	.4375	1.1250	.5625	.4375	.4375	.8125	1.8125	.170	AW-7	AG-7	HF-7C	HFL-7C	CFF-7	CFFL-7
CFF-8	CFFL-8	.5000	1.3125	.6250	.5000	.5000	.9375	2.1250	.260	AW-8	AG-8	HF-8C	HFL-8C	CFF-8	CFFL-8
CFF-10	CFFL-10	.6250	1.5000	.7500	.5625	.6250	1.1875	2.5000	.410	AW-10	AG-10	HF-10C	HFL-10C	CFF-10	CFFL-10
CFF-12	CFFL-12	.7500	1.7500	.8750	.6875	.7500	1.3750	2.8750	.640	AW-12	AG-12	HF-12C	HFL-12C	CFF-12	CFFL-12



Our Service Is...

Making our products readily available to you through a nationwide system of warehouses and sales offices. **Consolidated** is ready to fulfill your daily or long term requirements for bearings and related products. We offer the following:

Same Day Shipping Service - All orders that can be filled are shipped the same day they are received.

Emergency Shipment Service – Our staff is available to serve your requirements 24 hours a day, throughout the year including holidays. Emergency phone numbers are listed in our current price schedule.

Overseas Air Service – If stock is available, **Consolidated** will arrange airfreight shipments from our overseas suppliers. Shipments are normally delivered within 10 days.

Direct Phone Order Service – Your calls reach our order desks directly. No voice mail and no delays. WATS numbers for all warehouse locations are listed on the back page of our current price schedule.

Stock Availability Service – With our computerized inventory control system, we can provide you with an immediate answer concerning stock availability from all of our nine (9) warehouse locations. For items not available, precise delivery dates can usually be given.

Technical Service – Our engineering staff can provide you with up-to-date technical information regarding all types of bearing applications.

24-Hour Fax Service – Fax numbers for all warehouse locations are indicated on the back page of our current price schedule.

Bearing Modification Service – Our Cedar Knolls facility is equipped to modify cylindrical roller and needle bearings to various internal clearances – C/3, C/4, W/23, C/5 or custom clearances to meet your special requirements.